

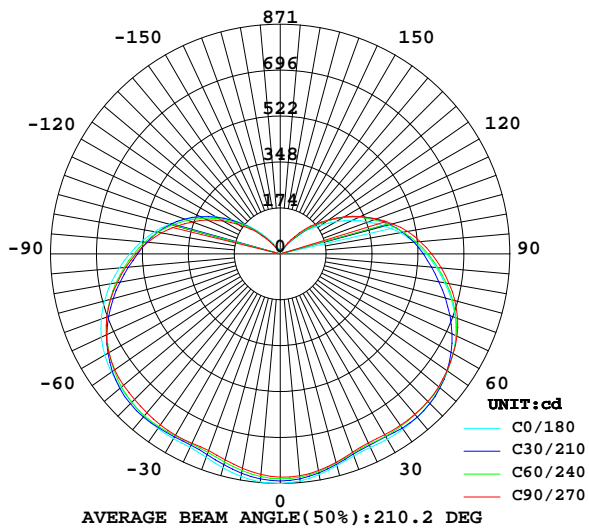
LUMINAIRE PHOTOMETRIC TEST REPORT

Report number:

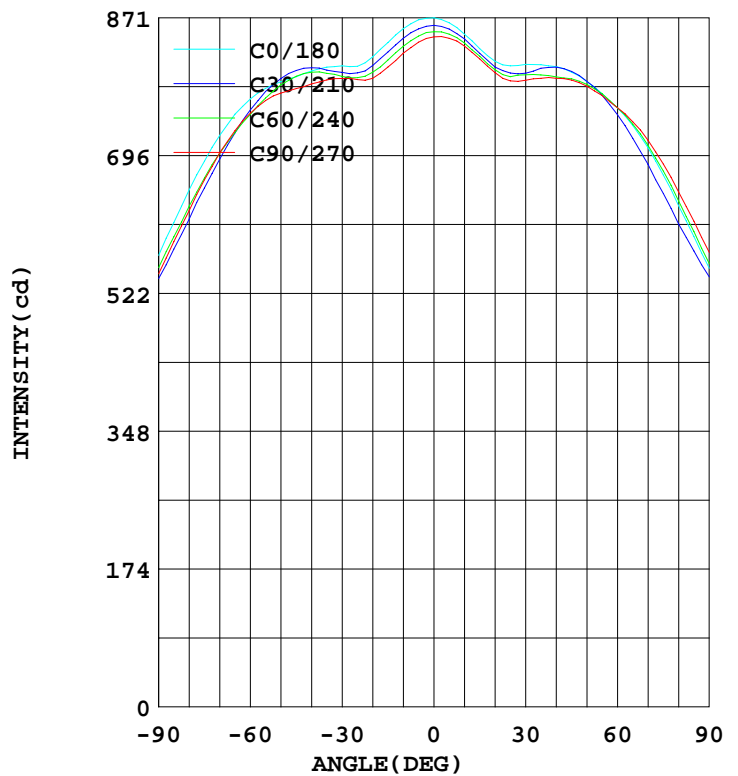
MANUFACTURER:	Address:		
NAME: 50W	TYPE:	WEIGHT:	
SPECIFICATION:	DIMENSION:	SERIAL No.:	

DATA OF LAMP		Imax(cd)	870.6	S/MH(C0/180)	1.43
MODEL		EFFICIENCY(%)	100.0	S/MH(C90/270)	1.44
NOMINAL POWER(W)	50	TOTAL FLUX(lm)	6182.9	Voltage(V)	220.1
RATED VOLTAGE(V)	220	EFFICIENCY(lm/W)	125.1	Current(A)	0.234
NOMINAL FLUX(lm)	6182.9	η up(%)	26.7	Power(W)	49.43
LAMPS QUANTITY	1	η down(%)	73.3	Power Factor(PF)	0.957
TEST VOLTAGE(V)	220.2	Effective Flux(lm)	6129.7	EEL	0.110

LUMINOUS INTENSITY DISTRIBUTION



LUMINOUS INTENSITY DISTRIBUTION



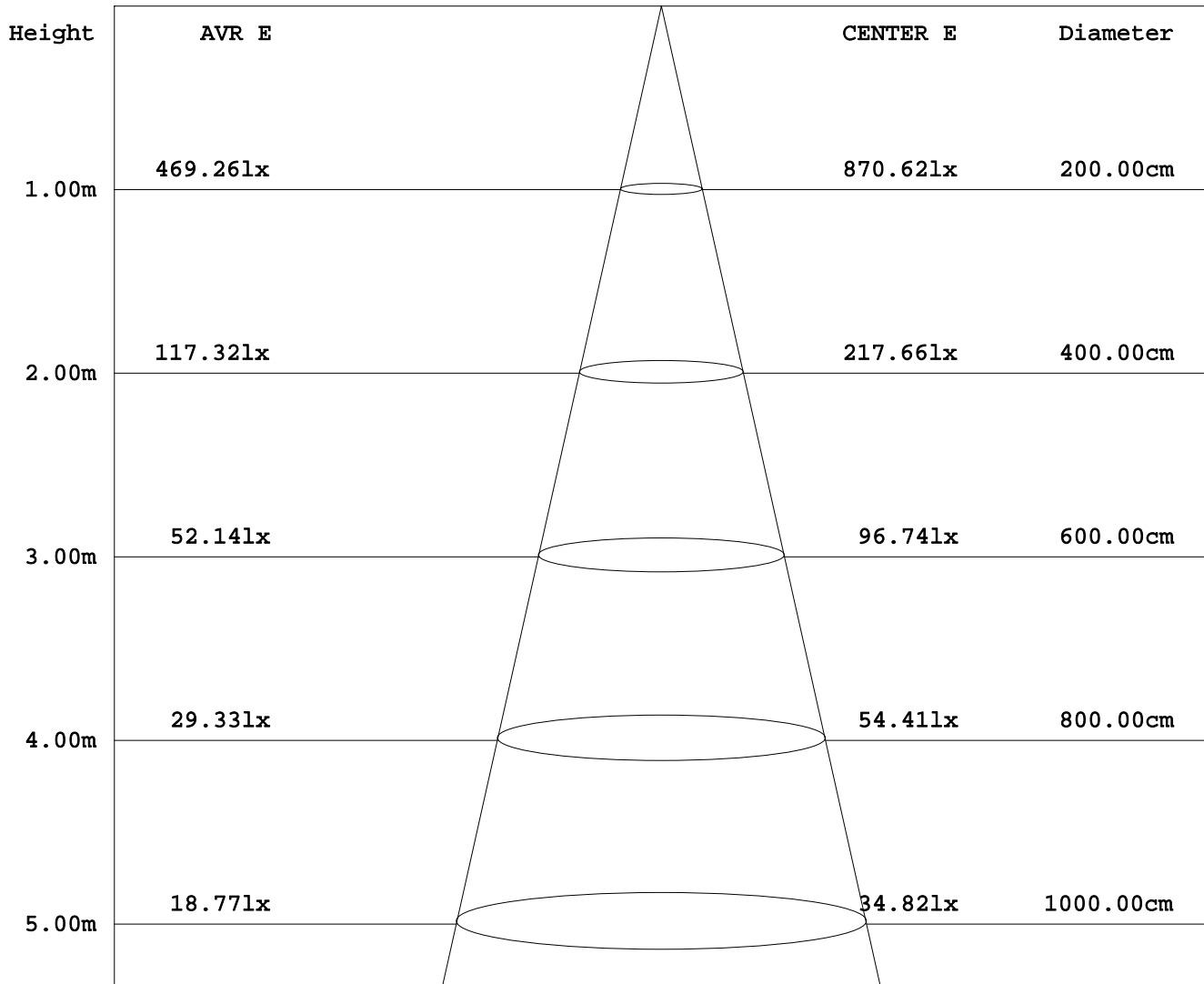
Test System:HOPOO HPG1800
 Temperature:25.3DEG
 Operators:
 Test Date:2014年06月23日

Test Set: 8.0deg/s C-Gamma (TYPE C)
 Humidity:65.0%
 Test Distance:6.000 m
 Remarks:

AVERAGE AND CENTER E Figure

Report number:

MANUFACTURER:	Address:	
NAME: 50W	TYPE:	WEIGHT:
SPECIFICATION:	DIMENSION:	SERIAL No.:



Angle:90.0deg

Test System:HOPOO HPG1800
 Temperature:25.3DEG
 Operators:
 Test Date:2014年06月23日

Test Set: 8.0deg/s C-Gamma (TYPE C)
 Humidity:65.0%
 Test Distance:6.000 m
 Remarks:

HONGPU GONIOPHOTOMETERS SYSTEM TEST REPORT

ZONAL FLUX DIAGRAM

Report number:

MANUFACTURER:	Address:	
NAME: 50W	TYPE:	WEIGHT:
SPECIFICATION:	DIMENSION:	SERIAL No.:

γ	C0	C45	C90	C135	C180	C225	C270	C315	γ	Φ zone	Φ total
5.0	868.1	852.0	839.7	830.5	864.2	853.1	844.6	837.5	0- 5	20.30	20.30
10.0	856.7	839.6	825.7	816.2	849.6	841.2	834.7	828.5	5- 10	60.15	80.45
15.0	839.3	822.4	808.4	798.8	831.6	823.8	818.4	812.7	10- 15	98.00	178.4
20.0	821.1	806.0	794.0	785.4	815.4	806.5	801.0	794.6	15- 20	133.3	311.8
25.0	809.2	797.9	792.5	782.2	809.9	798.4	790.9	782.3	20- 25	167.1	478.9
30.0	809.7	799.0	793.8	785.1	811.7	799.5	791.6	780.9	25- 30	200.9	679.9
35.0	808.2	802.4	792.1	789.3	811.1	802.6	794.1	783.1	30- 35	234.3	914.2
40.0	803.3	804.6	787.0	788.9	808.8	802.0	794.1	784.8	35- 40	265.8	1180
45.0	796.0	800.3	781.0	781.8	801.8	798.2	791.8	783.4	40- 45	294.0	1474
50.0	789.8	789.9	775.5	768.6	790.0	788.3	784.1	775.5	45- 50	318.0	1792
55.0	781.3	773.3	766.0	749.2	774.5	773.4	772.2	762.2	50- 55	337.0	2129
60.0	767.9	751.4	750.0	724.0	756.7	752.4	756.9	742.6	55- 60	350.3	2480
65.0	748.7	725.4	727.9	694.4	734.3	727.1	739.1	718.2	60- 65	357.8	2838
70.0	722.1	695.9	700.2	661.6	706.5	697.4	715.8	689.4	65- 70	359.0	3197
75.0	689.3	661.8	665.8	626.7	671.8	662.7	685.6	656.0	70- 75	354.2	3551
80.0	653.2	624.5	627.0	591.0	633.0	624.6	650.5	619.4	75- 80	343.8	3895
85.0	612.0	586.1	587.8	555.2	594.2	588.1	613.6	583.1	80- 85	328.6	4223
90.0	570.5	548.0	547.2	520.2	554.0	551.5	574.0	545.9	85- 90	310.4	4534
95.0	529.8	511.5	504.0	483.9	509.9	513.8	533.4	511.1	90- 95	289.8	4824
100.0	484.2	471.6	458.0	444.5	463.4	473.2	490.3	474.3	95-100	265.9	5090
105.0	434.6	427.1	406.9	401.4	408.8	428.8	440.4	435.4	100-105	238.7	5328
110.0	384.3	379.5	354.0	355.2	354.5	382.6	389.0	393.8	105-110	208.9	5537
115.0	333.3	327.7	304.5	302.4	301.8	332.3	335.4	346.6	110-115	177.2	5714
120.0	280.6	271.2	249.1	246.1	245.0	277.5	281.0	292.1	115-120	144.5	5859
125.0	226.4	215.3	195.0	190.4	190.5	220.0	226.1	237.3	120-125	111.7	5971
130.0	174.3	162.0	145.6	139.1	146.4	163.7	175.9	180.9	125-130	81.36	6052
135.0	124.7	111.4	97.05	87.49	100.0	111.9	131.1	129.6	130-135	55.46	6108
140.0	81.93	69.67	58.60	54.88	61.02	68.94	84.63	82.42	135-140	33.35	6141
145.0	47.66	38.71	31.78	30.47	31.75	38.75	51.76	47.50	140-145	18.02	6159
150.0	25.52	21.04	17.35	18.01	17.13	21.36	25.88	25.88	145-150	8.764	6168
155.0	19.58	17.91	16.48	17.60	16.81	17.49	18.90	17.31	150-155	4.827	6173
160.0	19.26	17.83	16.63	17.54	16.95	17.38	18.50	17.19	155-160	3.701	6176
165.0	19.00	17.78	16.74	17.51	17.13	17.38	18.25	17.13	160-165	2.899	6179
170.0	18.86	17.78	16.84	17.49	17.35	17.45	18.14	17.20	165-170	2.085	6181
175.0	18.75	17.80	16.92	17.45	17.60	17.56	18.10	17.29	170-175	1.259	6183
180.0	18.36	17.69	17.02	17.45	18.18	17.65	17.89	17.33	175-180	0.422	6183
DEG	LUMINOUS INTENSITY:cd									UNIT:lm	

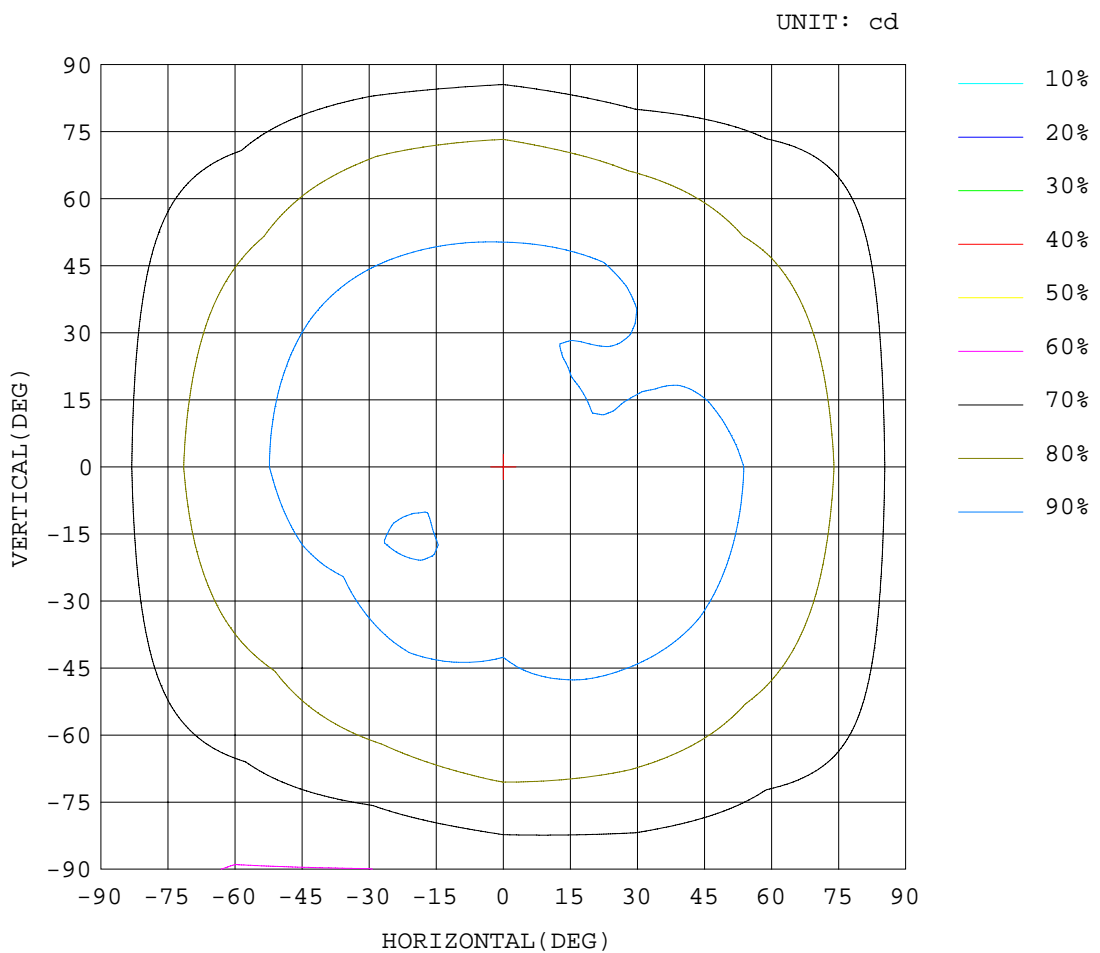
Test System:HOPPO HPG1800
 Temperature:25.3DEG
 Operators:
 Test Date:2014年06月23日

Test Set: 8.0deg/s C-Gamma (TYPE C)
 Humidity:65.0%
 Test Distance:6.000 m
 Remarks:

ISOCANDELA DIAGRAM

Report number:

MANUFACTURER:	Address:	
NAME: 50W	TYPE:	WEIGHT:
SPECIFICATION:	DIMENSION:	SERIAL No.:



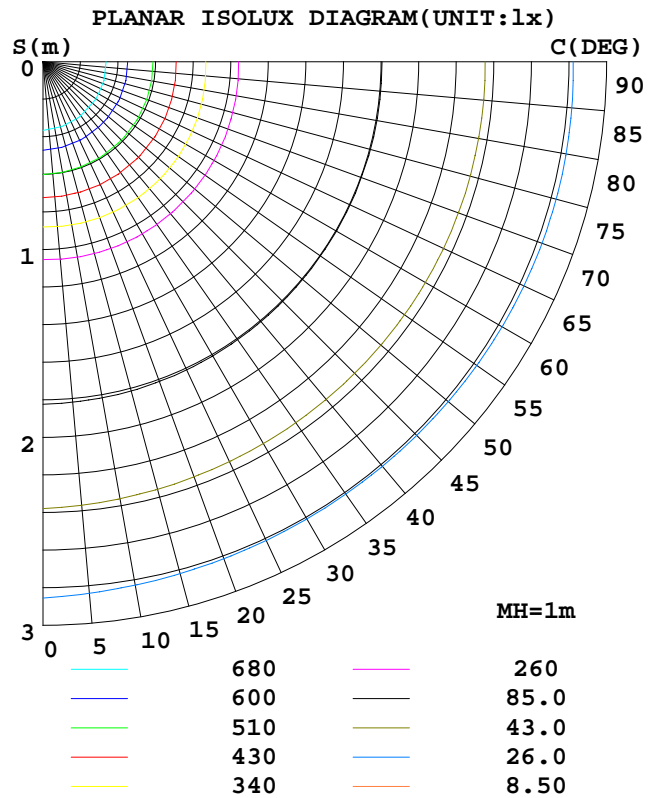
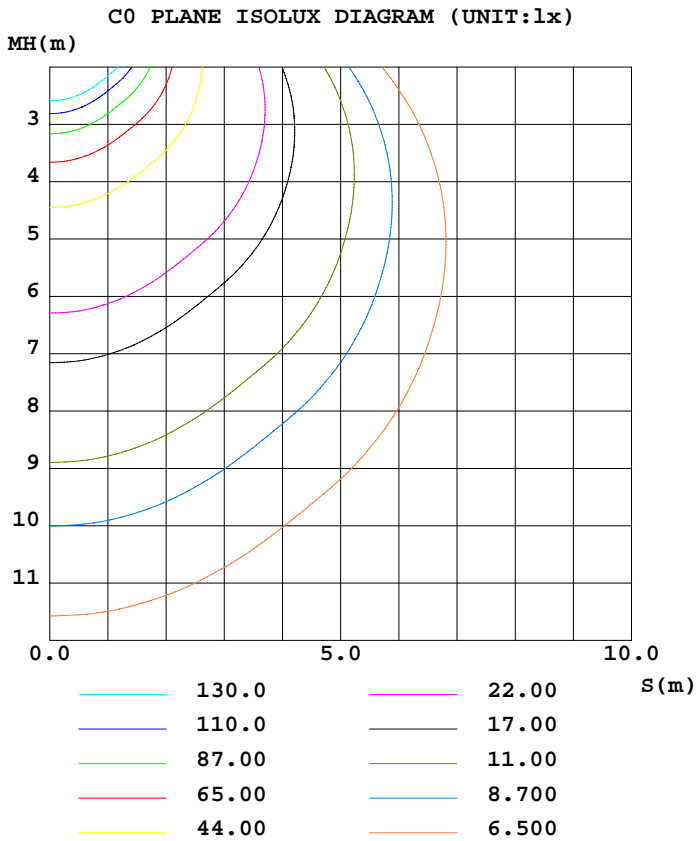
Test System:HOPOO HPG1800
 Temperature:25.3DEG
 Operators:
 Test Date:2014年06月23日

Test Set: 8.0deg/s C-Gamma (TYPE C)
 Humidity:65.0%
 Test Distance:6.000 m
 Remarks:

ISOLUX DIAGRAM

Report number:

MANUFACTURER:	Address:	
NAME: 50W	TYPE:	WEIGHT:
SPECIFICATION:	DIMENSION:	SERIAL No.:



Test System:HOPPO HPG1800
 Temperature:25.3DEG
 Operators:
 Test Date:2014年06月23日

Test Set: 8.0deg/s C-Gamma (TYPE C)
 Humidity:65.0%
 Test Distance:6.000 m
 Remarks:

HONGPU GONIOPHOTOMETERS SYSTEM TEST REPORT

LUMINOUS DISTRIBUTION INTENSITY DATA

Report number:

MANUFACTURER:	Address:	
NAME: 50W	TYPE:	WEIGHT:
SPECIFICATION:	DIMENSION:	SERIAL No.:

UNIT: cd

γ (DEG)	C (DEG)											
	0	30	60	90	120	150	180	210	240	270	300	330
0.0	871	861	853	846	841	835	871	861	853	846	841	835
5.0	868	856	848	840	833	828	864	856	850	845	841	834
10.0	857	845	835	826	818	814	850	844	839	835	832	825
15.0	839	827	817	808	801	796	832	826	822	818	817	809
20.0	821	810	802	794	788	783	815	808	805	801	798	791
25.0	809	801	795	793	786	779	810	801	796	791	785	780
30.0	810	802	797	794	788	782	812	801	798	792	782	780
35.0	808	804	800	792	792	787	811	807	798	794	787	779
40.0	803	807	802	787	792	786	809	808	796	794	792	777
45.0	796	804	797	781	785	779	802	803	794	792	792	775
50.0	790	794	786	776	772	765	790	790	786	784	783	768
55.0	781	777	769	766	753	745	775	772	774	772	769	755
60.0	768	754	749	750	728	720	757	748	757	757	748	737
65.0	749	725	726	728	699	690	734	718	736	739	722	715
70.0	722	692	700	700	665	659	707	685	709	716	691	688
75.0	689	656	668	666	628	625	672	649	677	686	656	656
80.0	653	616	633	627	592	590	633	610	639	651	619	620
85.0	612	578	594	588	556	555	594	576	600	614	584	583
90.0	571	541	555	547	522	519	554	543	560	574	548	544
95.0	530	507	516	504	488	479	510	509	518	533	514	508
100.0	484	472	471	458	451	439	463	472	475	490	479	470
105.0	435	431	423	407	409	394	409	430	428	440	440	431
110.0	384	386	373	354	365	346	355	386	379	389	397	391
115.0	333	334	321	305	310	295	302	334	330	335	350	343
120.0	281	278	265	249	252	240	245	278	277	281	295	289
125.0	226	221	210	195	195	186	191	221	219	226	238	237
130.0	174	164	160	146	141	137	146	162	166	176	183	179
135.0	125	111	112	97.0	83.9	91.0	100	110	114	131	132	128
140.0	81.9	66.8	72.5	58.6	54.5	55.2	61.0	67.8	69.9	84.6	82.4	82.3
145.0	47.6	37.5	39.8	31.7	31.1	29.8	31.7	38.5	38.9	51.7	47.8	47.1
150.0	25.5	21.1	20.9	17.3	19.5	16.4	17.1	22.1	20.5	25.8	24.7	27.0
155.0	19.5	16.7	19.0	16.4	19.0	16.1	16.8	18.9	16.0	18.9	15.8	18.8
160.0	19.2	16.9	18.7	16.6	18.7	16.3	16.9	18.5	16.1	18.5	15.9	18.4
165.0	19.0	17.0	18.5	16.7	18.5	16.4	17.1	18.3	16.3	18.2	16.0	18.2
170.0	18.8	17.1	18.3	16.8	18.3	16.5	17.3	18.3	16.5	18.1	16.2	18.1
175.0	18.7	17.3	18.2	16.9	18.2	16.6	17.6	18.2	16.8	18.1	16.4	18.1
180.0	18.3	17.4	17.9	17.0	18.0	16.8	18.1	18.1	17.2	17.8	16.8	17.8

Test System:HOPOO HPG1800
 Temperature:25.3DEG
 Operators:
 Test Date:2014年06月23日

Test Set: 8.0deg/s C-Gamma (TYPE C)
 Humidity:65.0%
 Test Distance:6.000 m
 Remarks: