

HONGPU GONIOPHOTOMETERS SYSTEM TEST REPORT

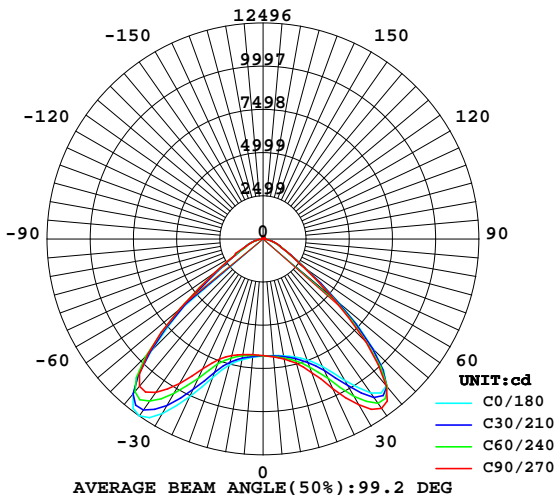
LUMINAIRE PHOTOMETRIC TEST REPORT

Report number:

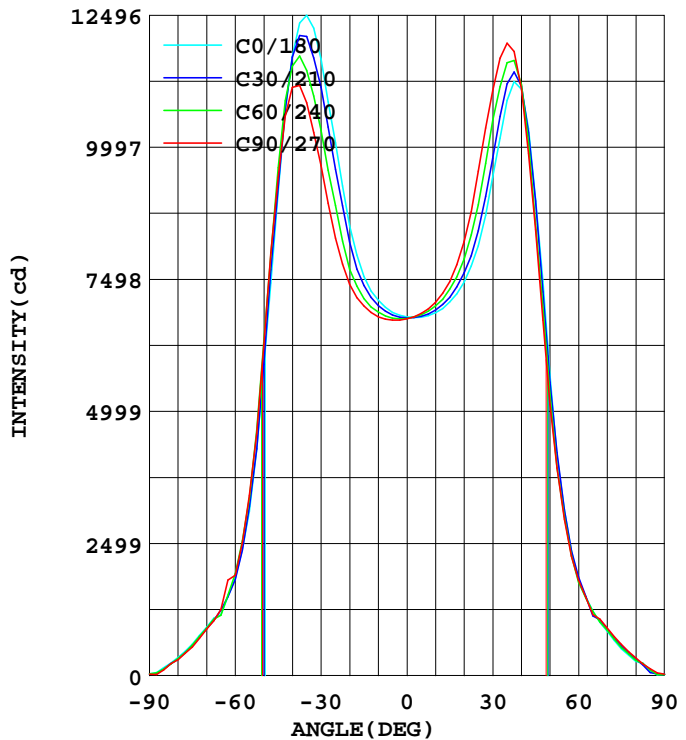
MANUFACTURER:	Address:		
NAME: BB-UFO-200W-E	TYPE:	WEIGHT:	
SPECIFICATION:	DIMENSION:	SERIAL No.:	

DATA OF LAMP		Imax(cd)	12556	S/MH(C0/180)	1.66
MODEL		EFFICIENCY(%)	100.0	S/MH(C90/270)	1.69
NOMINAL POWER(W)	192	TOTAL FLUX(lm)	26363	Voltage(V)	227.0
RATED VOLTAGE(V)	228	EFFICIENCY(lm/W)	137.7	Current(A)	0.867
NOMINAL FLUX(lm)	26363.2	$\eta$ up(%)	1.8	Power(W)	191.3
LAMPS QUANTITY	1	$\eta$ down(%)	98.2	Power Factor(PF)	0.972
TEST VOLTAGE(V)	227.0	Effective Flux(lm)	24606.0	EEl	0.106

LUMINOUS INTENSITY DISTRIBUTION



LUMINOUS INTENSITY DISTRIBUTION



Test System:HOPPO HPG1800  
 Temperature:25.3DEG  
 Operators:  
 Test Date:07-04-2018

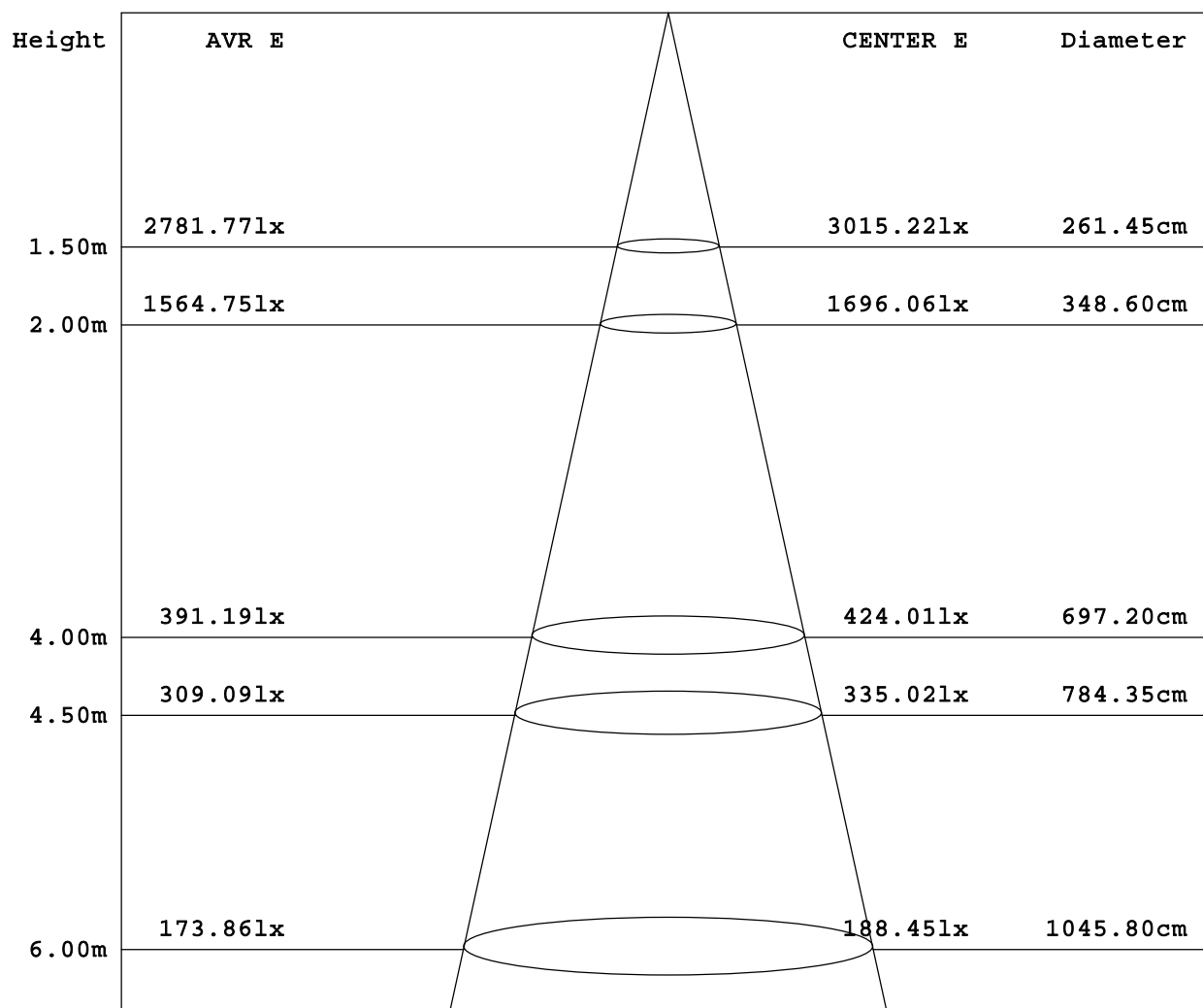
Test Set: 10.0deg/s C-Gamma (TYPE C)  
 Humidity:65.0%  
 Test Distance:6.000 m  
 Remarks:

HONGPU GONIOPHOTOMETERS SYSTEM TEST REPORT

AVERAGE AND CENTER E Figure

Report number:

MANUFACTURER:	Address:	
NAME: BB-UFO-200W-E	TYPE:	WEIGHT:
SPECIFICATION:	DIMENSION:	SERIAL No.:



Angle: 82.1deg

Test System:HOPOO HPG1800  
 Temperature:25.3DEG  
 Operators:  
 Test Date:07-04-2018

Test Set: 10.0deg/s C-Gamma (TYPE C)  
 Humidity:65.0%  
 Test Distance:6.000 m  
 Remarks:

# HONGPU GONIOPHOTOMETERS SYSTEM TEST REPORT

## ZONAL FLUX DIAGRAM

Report number:

<b>MANUFACTURER:</b>	<b>Address:</b>	
<b>NAME: BB-UFO-200W-E</b>	<b>TYPE:</b>	<b>WEIGHT:</b>
<b>SPECIFICATION:</b>	<b>DIMENSION:</b>	<b>SERIAL No.:</b>

$\gamma$	C0	C45	C90	C135	C180	C225	C270	C315	$\gamma$	$\Phi$ zone	$\Phi$ total
5.0	687.2	679.4	672.4	669.6	678.0	681.3	685.2	686.6	0- 5	162.0	162.0
10.0	710.1	693.6	678.8	673.6	686.4	695.4	706.1	713.9	5- 10	491.4	653.5
15.0	754.7	725.9	699.2	689.6	707.1	723.5	745.1	765.5	10- 15	842.0	1496
20.0	851.0	794.9	740.7	721.4	744.6	775.2	821.9	873.0	15- 20	1247	2743
25.0	1008	923.6	827.8	785.9	813.3	866.0	954.2	1031	20- 25	1773	4515
30.0	1166	1072	964.8	905.7	943.7	1014	1106	1191	25- 30	2466	6982
35.0	1250	1177	1084	1046	1088	1140	1197	1246	30- 35	3255	10237
40.0	1172	1162	1113	1103	1109	1117	1110	1116	35- 40	3838	14075
45.0	915.7	942.6	943.0	959.7	901.3	876.1	844.0	822.5	40- 45	3788	17863
50.0	583.6	610.2	624.5	644.9	568.1	543.1	512.5	497.8	45- 50	2980	20843
55.0	311.3	327.5	341.3	350.4	313.6	307.3	295.7	283.0	50- 55	1888	22730
60.0	184.3	187.4	189.6	198.7	181.2	181.9	181.0	174.7	55- 60	1129	23860
65.0	115.6	119.1	124.8	130.2	122.0	117.2	115.6	119.1	60- 65	746.2	24606
70.0	91.15	89.05	87.33	90.40	84.13	86.57	89.73	88.37	65- 70	531.6	25138
75.0	59.95	57.15	54.33	56.64	50.51	54.49	58.86	56.32	70- 75	376.4	25514
80.0	34.37	31.74	29.73	31.50	26.97	30.03	33.52	30.97	75- 80	230.8	25745
85.0	14.81	12.30	10.68	8.411	8.571	8.029	12.72	8.661	80- 85	116.9	25862
90.0	3.308	2.894	2.509	2.804	1.828	2.170	2.566	2.237	85- 90	27.24	25889
95.0	3.751	3.465	3.196	3.389	2.419	2.678	2.980	2.786	90- 95	15.29	25904
100.0	4.424	4.192	3.988	4.134	3.254	3.468	3.715	3.574	95-100	18.78	25923
105.0	5.223	5.029	4.896	4.991	4.334	4.437	4.590	4.496	100-105	22.93	25946
110.0	6.102	5.968	5.929	5.968	5.454	5.461	5.544	5.437	105-110	27.35	25973
115.0	7.030	6.917	6.926	6.975	6.548	6.494	6.523	6.382	110-115	31.49	26005
120.0	7.848	7.799	7.862	7.932	7.578	7.457	7.372	7.243	115-120	34.87	26040
125.0	8.535	8.551	8.686	8.771	8.370	8.197	8.053	7.882	120-125	37.03	26077
130.0	9.144	9.102	9.331	9.378	9.003	8.712	8.643	8.348	125-130	37.65	26114
135.0	9.662	9.545	9.885	9.792	9.536	9.118	9.118	8.769	130-135	37.02	26151
140.0	10.11	10.04	10.36	10.20	9.921	9.559	9.511	9.250	135-140	35.58	26187
145.0	10.60	10.67	10.78	10.72	10.29	10.09	9.975	9.846	140-145	33.66	26221
150.0	11.32	11.41	11.32	11.36	10.91	10.77	10.69	10.59	145-150	31.46	26252
155.0	12.39	12.32	12.26	12.18	11.83	11.60	11.71	11.55	150-155	29.04	26281
160.0	13.66	13.46	13.47	13.21	13.00	12.52	12.97	12.57	155-160	26.19	26307
165.0	15.24	14.68	14.73	14.41	14.31	13.93	14.25	14.08	160-165	22.60	26330
170.0	16.11	15.78	15.88	15.54	15.48	15.22	15.54	15.31	165-170	17.77	26348
175.0	16.78	16.45	16.63	16.29	16.42	16.09	16.49	16.19	170-175	11.41	26359
180.0	16.92	16.62	16.94	16.60	17.00	16.63	16.91	16.60	175-180	3.953	26363
DEG	LUMINOUS INTENSITY:x10cd									UNIT:lm	

Test System:HOPPO HPG1800  
 Temperature:25.3DEG  
 Operators:  
 Test Date:07-04-2018

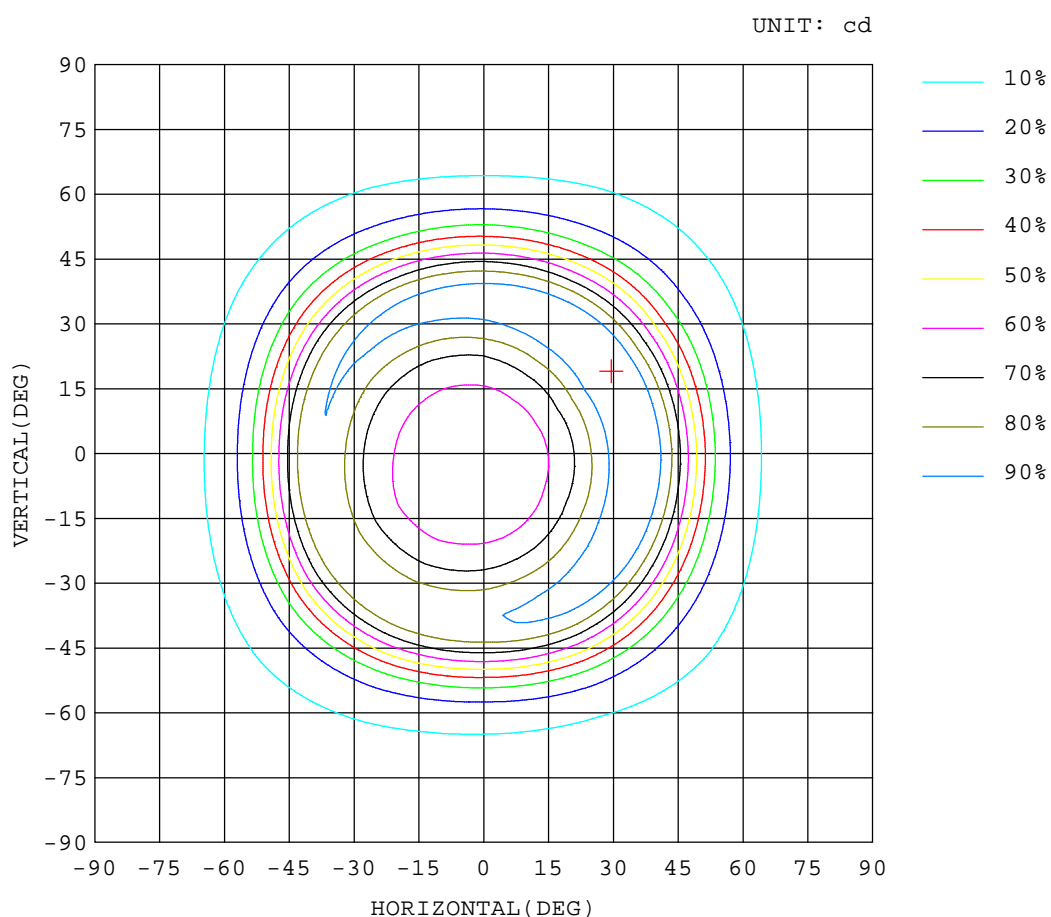
Test Set: 10.0deg/s C-Gamma (TYPE C)  
 Humidity:65.0%  
 Test Distance:6.000 m  
 Remarks:

# HONGPU GONIOPHOTOMETERS SYSTEM TEST REPORT

## ISOCANDELA DIAGRAM

Report number:

<b>MANUFACTURER:</b>	<b>Address:</b>	
<b>NAME: BB-UFO-200W-E</b>	<b>TYPE:</b>	<b>WEIGHT:</b>
<b>SPECIFICATION:</b>	<b>DIMENSION:</b>	<b>SERIAL No.:</b>



Test System:HOP00 HPG1800  
 Temperature:25.3DEG  
 Operators:  
 Test Date:07-04-2018

Test Set: 10.0deg/s C-Gamma (TYPE C)  
 Humidity:65.0%  
 Test Distance:6.000 m  
 Remarks:

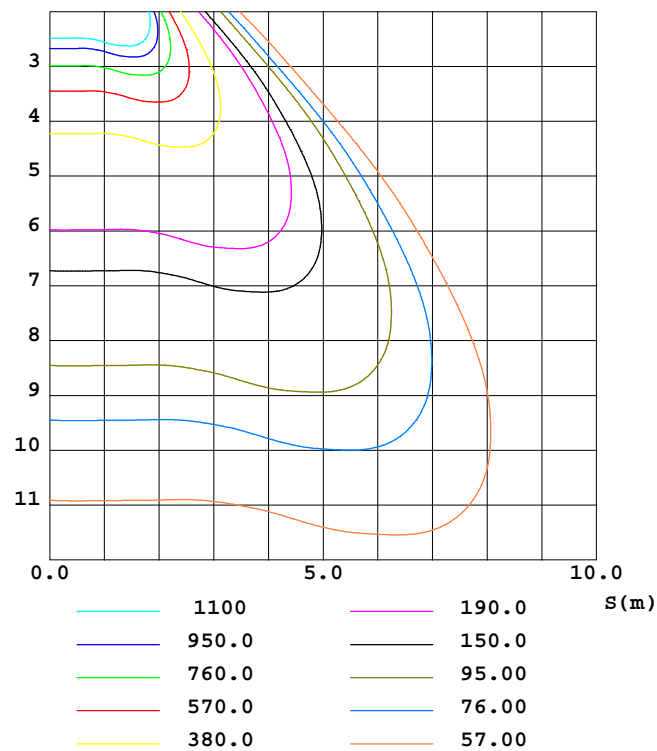
HONGPU GONIOPHOTOMETERS SYSTEM TEST REPORT

ISOLUX DIAGRAM

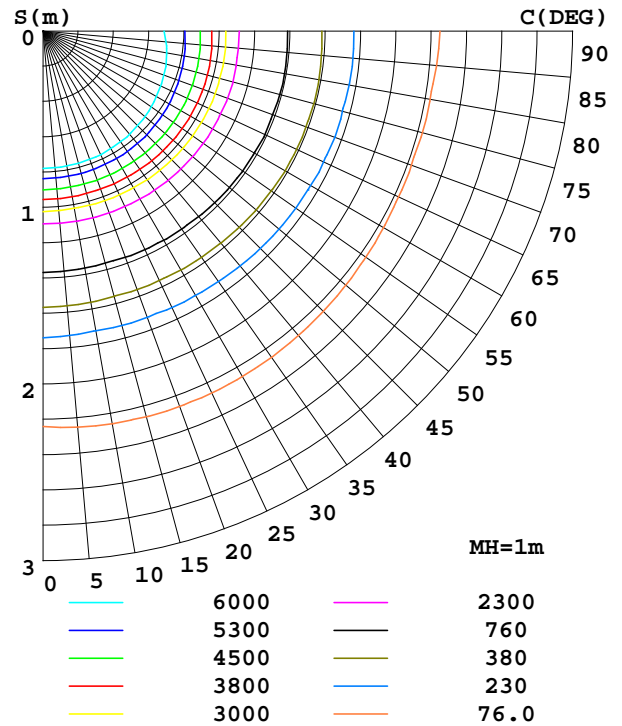
Report number:

MANUFACTURER:	Address:	
NAME: BB-UFO-200W-E	TYPE:	WEIGHT:
SPECIFICATION:	DIMENSION:	SERIAL No.:

C0 PLANE ISOLUX DIAGRAM (UNIT:lx)



PLANAR ISOLUX DIAGRAM(UNIT:lx)



Test System:HOP00 HPG1800  
 Temperature:25.3DEG  
 Operators:  
 Test Date:07-04-2018

Test Set: 10.0deg/s C-Gamma (TYPE C)  
 Humidity:65.0%  
 Test Distance:6.000 m  
 Remarks:

# HONGPU GONIOPHOTOMETERS SYSTEM TEST REPORT

## LUMINOUS DISTRIBUTION INTENSITY DATA

Report number:

<b>MANUFACTURER:</b>	<b>Address:</b>	
<b>NAME: BB-UFO-200W-E</b>	<b>TYPE:</b>	<b>WEIGHT:</b>
<b>SPECIFICATION:</b>	<b>DIMENSION:</b>	<b>SERIAL No.:</b>

UNIT:  $\times 10\text{cd}$

C(DEG) γ (DEG)	0	30	60	90	120	150	180	210	240	270	300	330
0.0	678	677	676	675	674	673	678	677	676	675	674	673
5.0	687	682	676	672	670	669	678	680	683	685	687	686
10.0	710	700	688	679	674	673	686	691	700	706	714	714
15.0	755	738	713	699	690	689	707	716	731	745	764	767
20.0	851	821	769	741	723	720	745	762	788	822	862	884
25.0	1008	958	889	828	792	780	813	842	890	954	1017	1045
30.0	1166	1113	1031	965	913	899	944	978	1050	1106	1179	1204
35.0	1250	1209	1145	1084	1047	1045	1088	1120	1159	1197	1237	1256
40.0	1172	1170	1153	1113	1101	1105	1109	1116	1118	1110	1111	1122
45.0	916	924	961	943	965	954	901	898	854	844	813	832
50.0	584	589	632	625	654	636	568	555	531	513	498	498
55.0	311	320	335	341	350	351	314	314	301	296	285	281
60.0	184	182	193	190	200	198	181	187	177	181	176	174
65.0	116	124	114	125	130	130	122	113	122	116	122	116
70.0	91.1	88.7	89.3	87.3	90.1	90.6	84.1	87.3	85.7	89.7	87.7	88.9
75.0	59.9	56.7	57.5	54.3	57.0	56.2	50.5	56.0	52.8	58.8	54.8	57.8
80.0	34.3	30.9	32.5	29.7	32.0	30.9	26.9	31.2	28.8	33.5	29.9	31.9
85.0	14.8	11.9	12.6	10.6	5.41	11.4	8.57	5.59	10.4	12.7	11.0	6.28
90.0	3.30	2.56	3.22	2.50	3.16	2.44	1.82	2.50	1.83	2.56	1.88	2.58
95.0	3.75	3.24	3.69	3.19	3.64	3.13	2.41	2.88	2.46	2.98	2.54	3.02
100.0	4.42	4.02	4.36	3.98	4.33	3.93	3.25	3.61	3.31	3.71	3.38	3.76
105.0	5.22	4.90	5.15	4.89	5.13	4.84	4.33	4.52	4.35	4.59	4.38	4.60
110.0	6.10	5.90	6.03	5.92	6.05	5.88	5.45	5.52	5.39	5.54	5.36	5.51
115.0	7.03	6.84	6.99	6.92	7.04	6.90	6.54	6.58	6.40	6.52	6.31	6.44
120.0	7.84	7.72	7.86	7.86	7.98	7.88	7.57	7.52	7.38	7.37	7.21	7.26
125.0	8.53	8.49	8.61	8.68	8.78	8.75	8.37	8.28	8.11	8.05	7.87	7.89
130.0	9.14	9.03	9.17	9.33	9.40	9.34	9.00	8.84	8.57	8.64	8.35	8.34
135.0	9.66	9.50	9.59	9.88	9.84	9.74	9.53	9.25	8.98	9.11	8.79	8.74
140.0	10.1	10.0	10.0	10.3	10.2	10.1	9.92	9.63	9.48	9.51	9.27	9.22
145.0	10.6	10.7	10.6	10.7	10.7	10.6	10.2	10.0	10.1	9.97	9.83	9.85
150.0	11.3	11.5	11.2	11.3	11.4	11.2	10.9	10.6	10.8	10.6	10.5	10.6
155.0	12.3	12.5	12.1	12.2	12.2	12.0	11.8	11.4	11.7	11.7	11.5	11.5
160.0	13.6	13.7	13.2	13.4	13.2	13.1	13.0	12.5	12.4	12.9	12.3	12.7
165.0	15.2	14.8	14.4	14.7	14.4	14.3	14.3	13.7	14.0	14.2	14.1	14.0
170.0	16.1	15.9	15.6	15.8	15.5	15.5	15.4	15.2	15.2	15.5	15.3	15.2
175.0	16.7	16.5	16.3	16.6	16.3	16.2	16.4	16.0	16.1	16.4	16.2	16.1
180.0	16.9	16.6	16.5	16.9	16.6	16.6	17.0	16.6	16.6	16.9	16.6	16.5

Test System:HOPOO HPG1800  
 Temperature:25.3DEG  
 Operators:  
 Test Date:07-04-2018

Test Set: 10.0deg/s C-Gamma (TYPE C)  
 Humidity:65.0%  
 Test Distance:6.000 m  
 Remarks: