

HONGPU GONIOPHOTOMETERS SYSTEM TEST REPORT

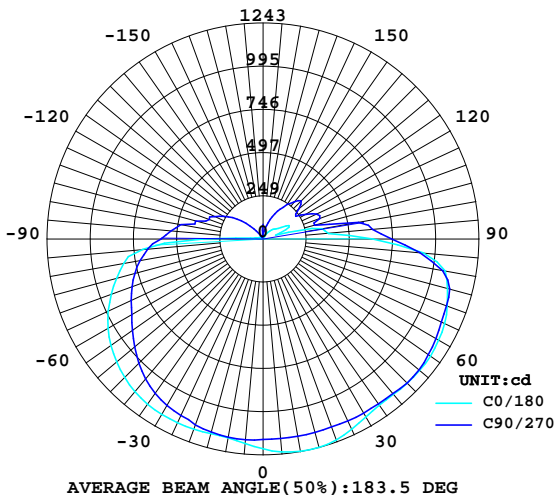
LUMINAIRE PHOTOMETRIC TEST REPORT

Report number:

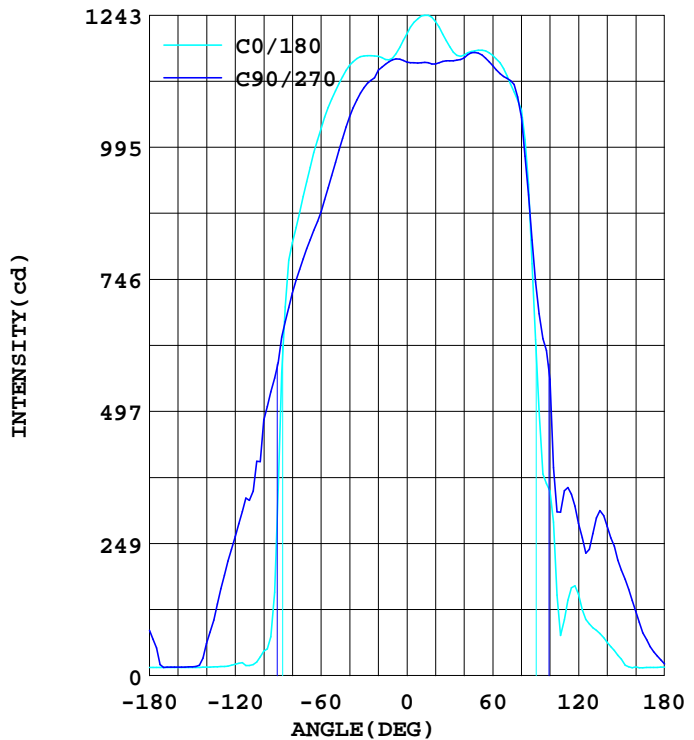
MANUFACTURER:	Address:	
NAME:	TYPE:12	WEIGHT:122
SPECIFICATION:2	DIMENSION: 1	SERIAL No.:

DATA OF LAMP		Imax(cd)	1243	S/MH(C0/180)	1.48
MODEL	1212	EFFICIENCY(%)	100.0	S/MH(C90/270)	1.44
NOMINAL POWER(W)	76	TOTAL FLUX(lm)	8150.0	Voltage(V)	220.3
RATED VOLTAGE(V)	220	EFFICIENCY(lm/W)	107.2	Current(A)	0.365
NOMINAL FLUX(lm)	8150.1	η up(%)	22.5	Power(W)	76.00
LAMPS QUANTITY	1	η down(%)	77.5	Power Factor(PF)	0.983
TEST VOLTAGE(V)	220.4	Effictive Flux(lm)	0.0	EEI	0.000

LUMINOUS INTENSITY DISTRIBUTION



LUMINOUS INTENSITY DISTRIBUTION



Test System:HOP00 HPG1800
 Temperature:25.3DEG
 Operators:
 Test Date:2013年12月03日

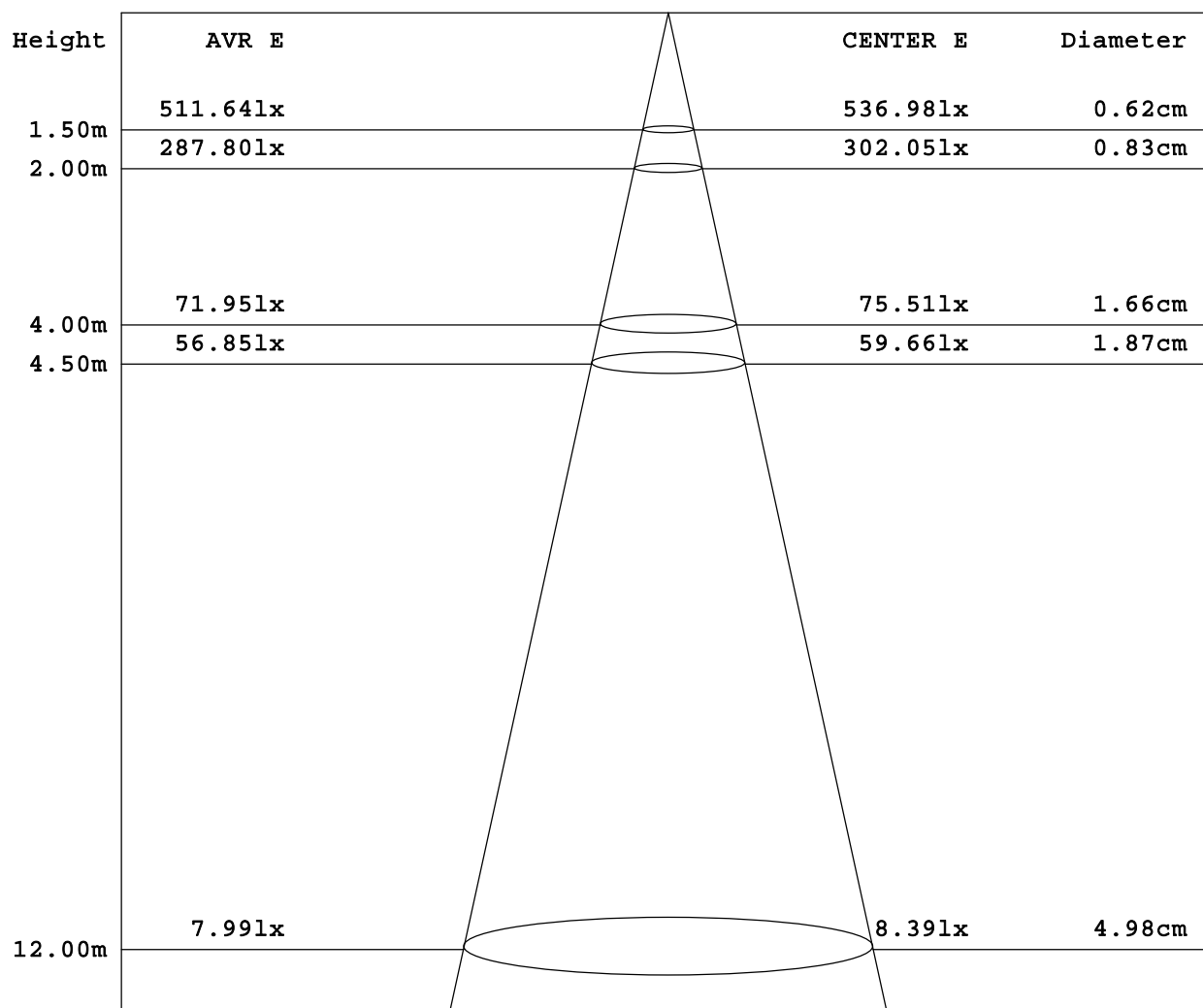
Test Set: 5.0deg/s C-Gamma (TYPE C)
 Humidity:65.0%
 Test Distance:8.370 m
 Remarks:

HONGPU GONIOPHOTOMETERS SYSTEM TEST REPORT

AVERAGE AND CENTER E Figure

Report number:

MANUFACTURER:	Address:	
NAME:	TYPE:12	WEIGHT:122
SPECIFICATION:2	DIMENSION: 1	SERIAL No.:



Angle:0.2deg

Test System:HOP00 HPG1800
 Temperature:25.3DEG
 Operators:
 Test Date:2013年12月03日

Test Set: 5.0deg/s C-Gamma (TYPE C)
 Humidity:65.0%
 Test Distance:8.370 m
 Remarks:

HONGPU GONIOPHOTOMETERS SYSTEM TEST REPORT

ZONAL FLUX DIAGRAM

Report number:

MANUFACTURER:	Address:	
NAME:	TYPE:12	WEIGHT:122
SPECIFICATION:2	DIMENSION: 1	SERIAL No.:

γ	C0	C45	C90	C135	C180	C225	C270	C315	γ	Φ zone	Φ total
5.0	1183	1151	1160	1091	1230	1186	1154	1061	0- 5	28	28
10.0	1163	1151	1160	1100	1242	1204	1154	1053	5- 10	82	110
15.0	1160	1157	1151	1113	1243	1213	1154	1053	10- 15	137	247
20.0	1166	1166	1140	1115	1232	1212	1152	1050	15- 20	190	437
25.0	1167	1167	1121	1107	1208	1202	1156	1039	20- 25	241	679
30.0	1167	1159	1107	1104	1184	1183	1158	1018	25- 30	289	967
35.0	1162	1142	1084	1101	1168	1166	1159	987.1	30- 35	332	1299
40.0	1149	1116	1052	1097	1169	1159	1163	949.6	35- 40	372	1671
45.0	1128	1082	1011	1095	1175	1165	1173	914.3	40- 45	407	2078
50.0	1101	1044	966.0	1100	1177	1168	1172	887.1	45- 50	438	2517
55.0	1070	1001	918.2	1101	1176	1167	1162	874.8	50- 55	464	2981
60.0	1030	956.9	873.1	1093	1168	1162	1149	861.4	55- 60	484	3466
65.0	984.2	909.8	838.0	1077	1154	1160	1133	820.1	60- 65	498	3963
70.0	929.9	858.8	803.5	1048	1129	1148	1125	739.1	65- 70	502	4466
75.0	872.0	806.0	764.4	1015	1099	1128	1113	627.4	70- 75	497	4962
80.0	814.4	748.4	719.8	981.4	1065	1100	1051	584.6	75- 80	485	5448
85.0	694.1	685.7	666.1	951.8	924.8	1063	905.1	549.8	80- 85	460	5908
90.0	349.7	616.7	589.1	934.8	632.4	1019	740.9	562.7	85- 90	408	6316
95.0	73.27	538.9	534.1	918.5	379.5	968.3	634.0	587.7	90- 95	343	6659
100.0	45.81	465.5	481.0	895.6	347.2	911.4	558.0	587.1	95-100	304	6962
105.0	25.85	381.0	403.6	833.7	151.6	851.8	308.5	441.7	100-105	257	7220
110.0	19.19	296.4	329.8	681.5	105.3	794.0	347.9	302.6	105-110	203	7422
115.0	24.51	224.1	309.1	446.2	165.4	730.6	341.3	166.2	110-115	168	7591
120.0	21.15	156.3	261.8	236.8	153.4	669.1	286.8	55.90	115-120	129	7719
125.0	17.93	97.02	215.3	81.89	106.0	606.9	230.8	21.22	120-125	92	7812
130.0	17.02	51.77	163.6	32.99	90.37	535.0	267.1	65.15	125-130	70	7881
135.0	16.39	18.42	104.3	37.48	79.23	452.8	310.6	116.8	130-135	60	7941
140.0	15.83	13.52	60.31	55.83	62.42	370.0	280.5	210.3	135-140	51	7991
145.0	15.55	13.59	19.33	82.31	47.21	281.0	243.7	277.2	140-145	43	8034
150.0	15.27	13.59	16.67	102.2	30.96	188.8	198.7	327.7	145-150	34	8069
155.0	15.20	13.52	16.25	155.9	16.39	127.6	162.4	363.9	150-155	28	8097
160.0	15.20	13.52	15.97	198.0	16.32	69.21	120.9	384.8	155-160	23	8120
165.0	15.27	13.59	15.76	238.1	14.99	35.86	80.63	328.9	160-165	17	8136
170.0	15.41	13.80	15.62	219.9	15.41	18.35	54.57	165.0	165-170	10	8146
175.0	15.55	13.94	52.26	96.32	15.62	16.95	36.84	49.39	170-175	4	8149
180.0	15.55	14.01	85.25	13.73	16.04	16.39	22.06	16.04	175-180	1	8150
DEG	LUMINOUS INTENSITY:cd									UNIT:lm	

Test System:HOPPO HPG1800
 Temperature:25.3DEG
 Operators:
 Test Date:2013年12月03日

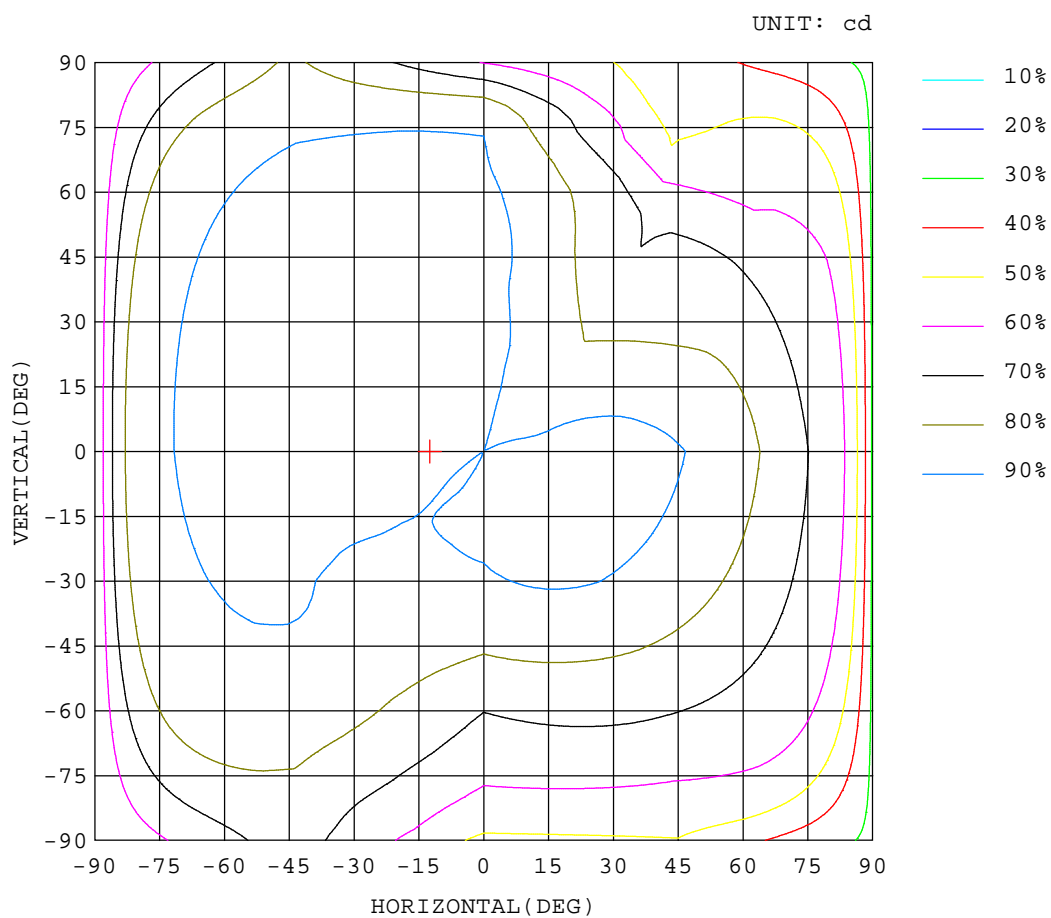
Test Set: 5.0deg/s C-Gamma (TYPE C)
 Humidity:65.0%
 Test Distance:8.370 m
 Remarks:

HONGPU GONIOPHOTOMETERS SYSTEM TEST REPORT

ISOCANDELA DIAGRAM

Report number:

MANUFACTURER:	Address:	
NAME:	TYPE:12	WEIGHT:122
SPECIFICATION:2	DIMENSION: 1	SERIAL No.:



Test System:HOP00 HPG1800
 Temperature:25.3DEG
 Operators:
 Test Date:2013年12月03日

Test Set: 5.0deg/s C-Gamma (TYPE C)
 Humidity:65.0%
 Test Distance:8.370 m
 Remarks:

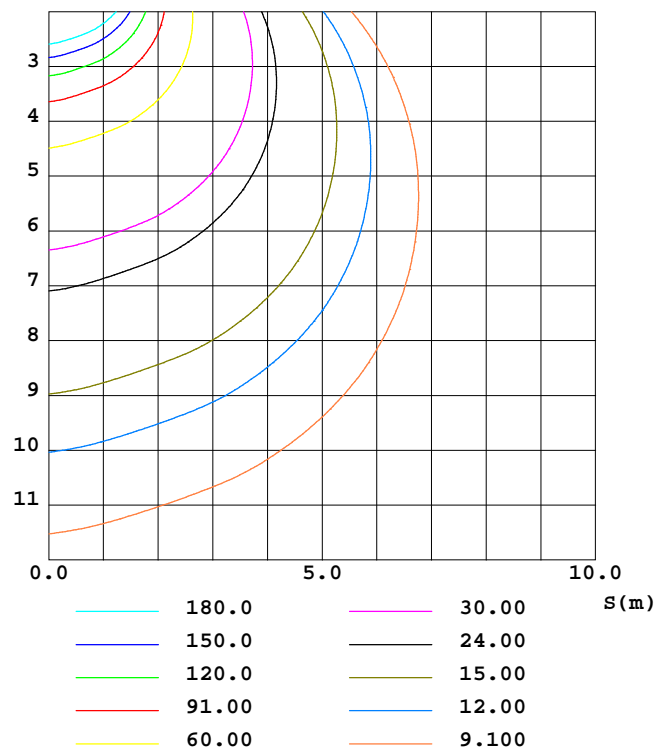
HONGPU GONIOPHOTOMETERS SYSTEM TEST REPORT

ISOLUX DIAGRAM

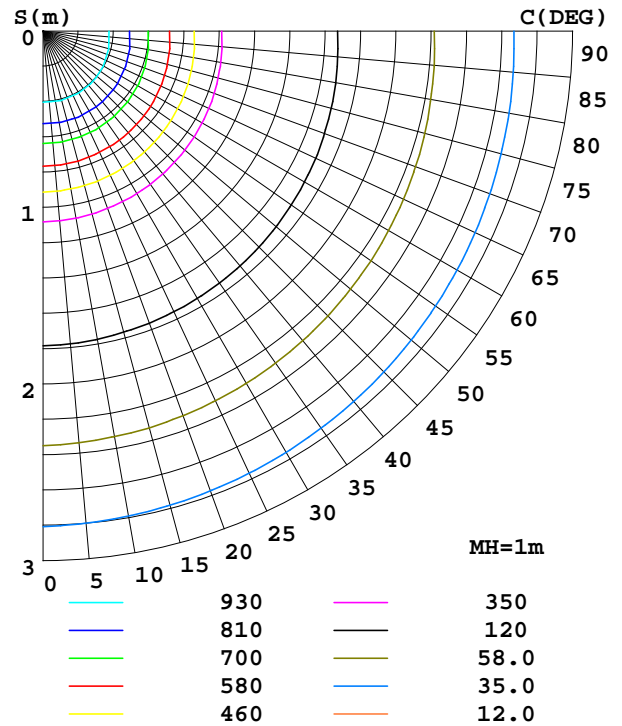
Report number:

MANUFACTURER:	Address:	
NAME:	TYPE:12	WEIGHT:122
SPECIFICATION:2	DIMENSION: 1	SERIAL No.:

C0 PLANE ISOLUX DIAGRAM (UNIT:lx)



PLANAR ISOLUX DIAGRAM(UNIT:lx)



Test System:HOP00 HPG1800
 Temperature:25.3DEG
 Operators:
 Test Date:2013年12月03日

Test Set: 5.0deg/s C-Gamma (TYPE C)
 Humidity:65.0%
 Test Distance:8.370 m
 Remarks:

HONGPU GONIOPHOTOMETERS SYSTEM TEST REPORT

LUMINOUS DISTRIBUTION INTENSITY DATA

Report number:

MANUFACTURER:	Address:	
NAME:	TYPE:12	WEIGHT:122
SPECIFICATION:2	DIMENSION: 1	SERIAL No.:

UNIT: cd

γ (DEG)	C(DEG)							
	0	45	90	135	180	225	270	315
0.0	1208	1166	1155	1076	1208	1166	1155	1076
5.0	1183	1151	1160	1091	1230	1186	1154	1061
10.0	1163	1151	1160	1100	1242	1204	1154	1053
15.0	1160	1157	1151	1113	1243	1213	1154	1053
20.0	1166	1166	1140	1115	1232	1212	1152	1050
25.0	1167	1167	1121	1107	1208	1202	1156	1039
30.0	1167	1159	1107	1104	1184	1183	1158	1018
35.0	1162	1142	1084	1101	1168	1166	1159	987
40.0	1149	1116	1052	1097	1169	1159	1163	950
45.0	1128	1082	1011	1095	1175	1165	1173	914
50.0	1101	1044	966	1100	1177	1168	1172	887
55.0	1070	1001	918	1101	1176	1167	1162	875
60.0	1030	957	873	1093	1168	1162	1149	861
65.0	984	910	838	1077	1154	1160	1133	820
70.0	930	859	804	1048	1129	1148	1125	739
75.0	872	806	764	1015	1099	1128	1113	627
80.0	814	748	720	981	1065	1100	1051	585
85.0	694	686	666	952	925	1063	905	550
90.0	350	617	589	935	632	1019	741	563
95.0	73.2	539	534	919	380	968	634	588
100.0	45.8	466	481	896	347	911	558	587
105.0	25.8	381	404	834	152	852	309	442
110.0	19.1	296	330	682	105	794	348	303
115.0	24.5	224	309	446	165	731	341	166
120.0	21.1	156	262	237	153	669	287	55.9
125.0	17.9	97.0	215	81.8	106	607	231	21.2
130.0	17.0	51.7	164	32.9	90.3	535	267	65.1
135.0	16.3	18.4	104	37.4	79.2	453	311	117
140.0	15.8	13.5	60.3	55.8	62.4	370	281	210
145.0	15.5	13.5	19.3	82.3	47.2	281	244	277
150.0	15.2	13.5	16.6	102	30.9	189	199	328
155.0	15.2	13.5	16.2	156	16.3	128	162	364
160.0	15.2	13.5	15.9	198	16.3	69.2	121	385
165.0	15.2	13.5	15.7	238	14.9	35.8	80.6	329
170.0	15.4	13.8	15.6	220	15.4	18.3	54.5	165
175.0	15.5	13.9	52.2	96.3	15.6	16.9	36.8	49.3
180.0	15.5	14.0	85.2	13.7	16.0	16.3	22.0	16.0

Test System:HOPPO HPG1800
 Temperature:25.3DEG
 Operators:
 Test Date:2013年12月03日

Test Set: 5.0deg/s C-Gamma (TYPE C)
 Humidity:65.0%
 Test Distance:8.370 m
 Remarks: