

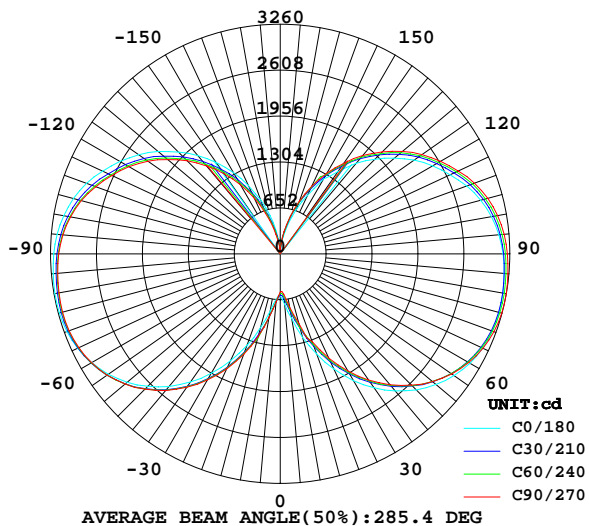
LUMINAIRE PHOTOMETRIC TEST REPORT

Report number:

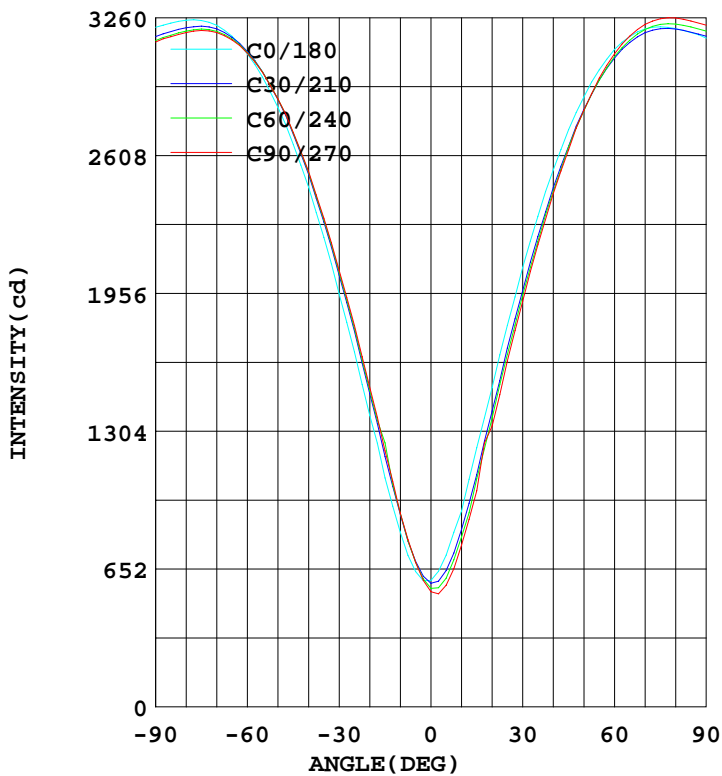
MANUFACTURER:	Address:	
NAME: 250W	TYPE:	WEIGHT:
SPECIFICATION:	DIMENSION:	SERIAL No.:

DATA OF LAMP		Imax(cd)	3263	S/MH(C0/180)	3.68
MODEL		EFFICIENCY(%)	100.0	S/MH(C90/270)	3.80
NOMINAL POWER(W)	250	TOTAL FLUX(lm)	31849	Voltage(V)	219.3
RATED VOLTAGE(V)	220	EFFICIENCY(lm/W)	127.4	Current(A)	1.182
NOMINAL FLUX(lm)	31849.0	η up(%)	45.4	Power(W)	250.0
LAMPS QUANTITY	1	η down(%)	54.6	Power Factor(PF)	0.975
TEST VOLTAGE(V)	219.3	Effictive Flux(lm)	31824.4	EEL	0.107

LUMINOUS INTENSITY DISTRIBUTION



LUMINOUS INTENSITY DISTRIBUTION



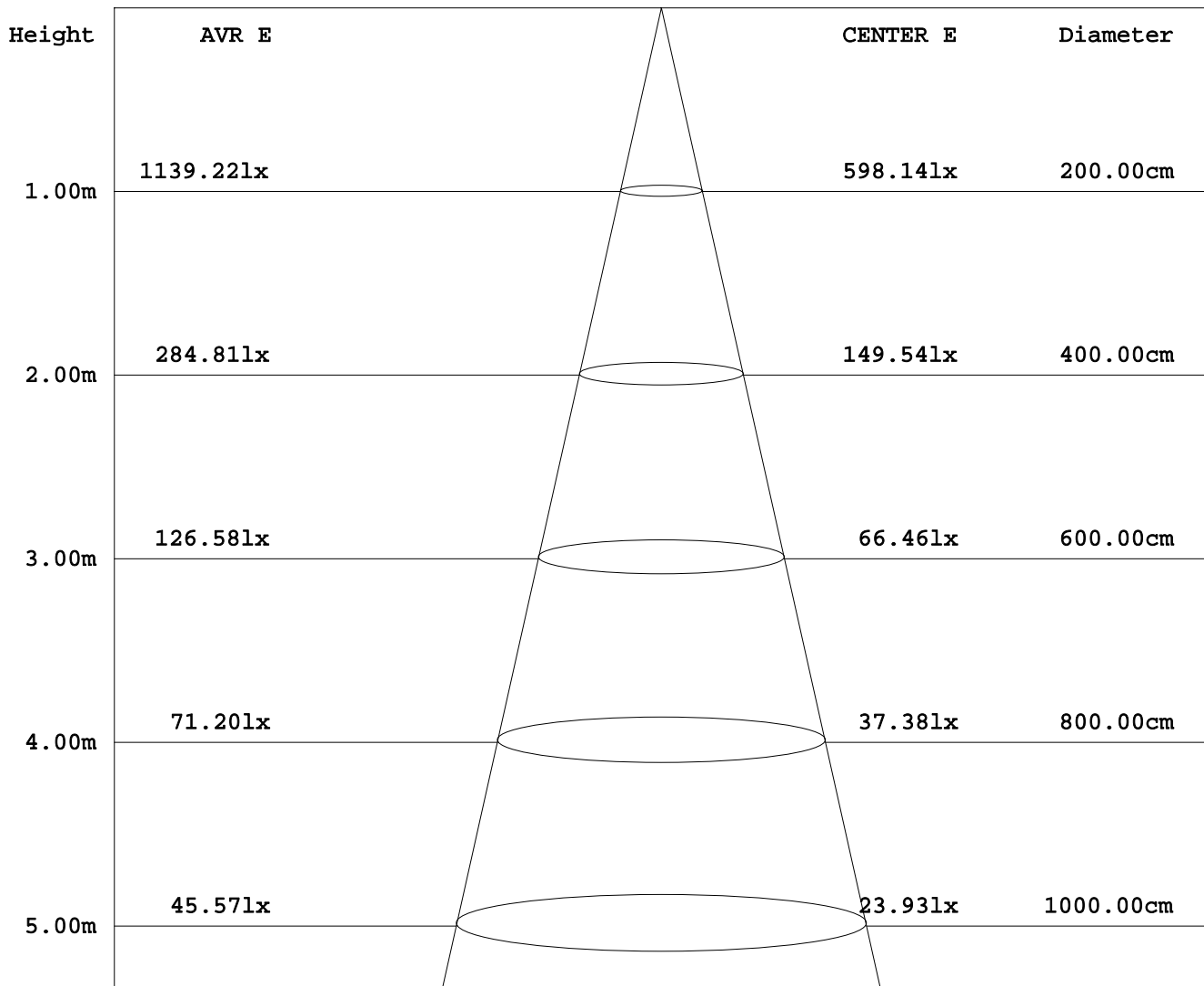
Test System:HOPOO HPG1800
 Temperature:25.3DEG
 Operators:
 Test Date:2014年12月04日

Test Set: 8.0deg/s C-Gamma (TYPE C)
 Humidity:65.0%
 Test Distance:6.000 m
 Remarks:

AVERAGE AND CENTER E Figure

Report number:

MANUFACTURER:	Address:	
NAME: 250W	TYPE:	WEIGHT:
SPECIFICATION:	DIMENSION:	SERIAL No.:



Angle:90.0deg

Test System:HOPPO HPG1800
 Temperature:25.3DEG
 Operators:
 Test Date:2014年12月04日

Test Set: 8.0deg/s C-Gamma (TYPE C)
 Humidity:65.0%
 Test Distance:6.000 m
 Remarks:

HONGPU GONIOPHOTOMETERS SYSTEM TEST REPORT

ZONAL FLUX DIAGRAM

Report number:

MANUFACTURER:	Address:	
NAME: 250W	TYPE:	WEIGHT:
SPECIFICATION:	DIMENSION:	SERIAL No.:

γ	C0	C45	C90	C135	C180	C225	C270	C315	γ	Φ zone	Φ total
5.0	639.8	685.8	684.2	636.6	717.9	627.1	576.0	606.2	0- 5	14.39	14.39
10.0	827.0	914.6	917.2	863.6	927.2	822.2	765.4	822.6	5- 10	53.90	68.29
15.0	1083	1216	1211	1167	1226	1089	1022	1100	10- 15	118.4	186.7
20.0	1380	1491	1513	1430	1511	1383	1328	1399	15- 20	213.0	399.8
25.0	1678	1783	1804	1724	1804	1682	1636	1704	20- 25	331.4	731.3
30.0	1954	2049	2066	1989	2079	1959	1919	1986	25- 30	472.1	1203
35.0	2220	2298	2312	2240	2320	2214	2186	2247	30- 35	627.7	1831
40.0	2460	2524	2533	2465	2540	2448	2428	2485	35- 40	791.0	2622
45.0	2660	2711	2717	2652	2731	2651	2636	2689	40- 45	956.7	3579
50.0	2835	2874	2876	2815	2884	2822	2822	2860	45- 50	1118	4697
55.0	2979	3003	3001	2947	3013	2965	2974	3003	50- 55	1269	5966
60.0	3088	3097	3092	3044	3109	3072	3088	3111	55- 60	1404	7370
65.0	3172	3163	3155	3114	3171	3148	3173	3188	60- 65	1519	8889
70.0	3224	3201	3190	3154	3206	3197	3228	3235	65- 70	1611	10500
75.0	3247	3213	3199	3169	3217	3218	3255	3254	70- 75	1679	12179
80.0	3248	3205	3189	3165	3208	3218	3259	3252	75- 80	1722	13901
85.0	3234	3185	3170	3149	3190	3203	3244	3234	80- 85	1743	15644
90.0	3215	3161	3145	3127	3163	3184	3224	3210	85- 90	1746	17390
95.0	3180	3117	3097	3086	3116	3148	3191	3170	90- 95	1729	19119
100.0	3120	3047	3022	3018	3045	3088	3134	3105	95-100	1687	20806
105.0	3039	2954	2925	2929	2945	3002	3052	3015	100-105	1620	22426
110.0	2928	2827	2789	2805	2820	2888	2935	2895	105-110	1527	23952
115.0	2782	2673	2636	2652	2660	2739	2787	2741	110-115	1410	25363
120.0	2627	2520	2479	2499	2499	2581	2629	2581	115-120	1278	26641
125.0	2455	2342	2295	2322	2323	2413	2457	2406	120-125	1139	27780
130.0	2264	2139	2083	2120	2116	2217	2263	2200	125-130	990.3	28770
135.0	2045	1925	1872	1909	1901	1999	2049	1981	130-135	835.4	29605
140.0	1823	1692	1633	1678	1679	1780	1824	1758	135-140	683.8	30289
145.0	1584	1450	1388	1438	1426	1529	1569	1504	140-145	537.3	30826
150.0	1335	1205	1138	1194	1232	1285	1324	1254	145-150	401.9	31228
155.0	1071	941.5	877.1	928.0	920.9	1029	1062	983.4	150-155	282.3	31511
160.0	817.5	689.9	617.6	676.2	670.5	769.9	799.0	729.7	155-160	178.5	31689
165.0	567.5	453.1	392.1	439.6	444.5	531.0	553.2	485.0	160-165	99.33	31789
170.0	328.5	245.9	196.8	232.2	243.0	313.4	323.1	265.3	165-170	44.59	31833
175.0	143.0	102.3	76.06	90.03	53.10	143.6	142.0	115.8	170-175	13.93	31847
180.0	55.00	52.95	51.40	52.27	54.46	52.79	53.92	52.27	175-180	1.901	31849
DEG	LUMINOUS INTENSITY:cd									UNIT:lm	

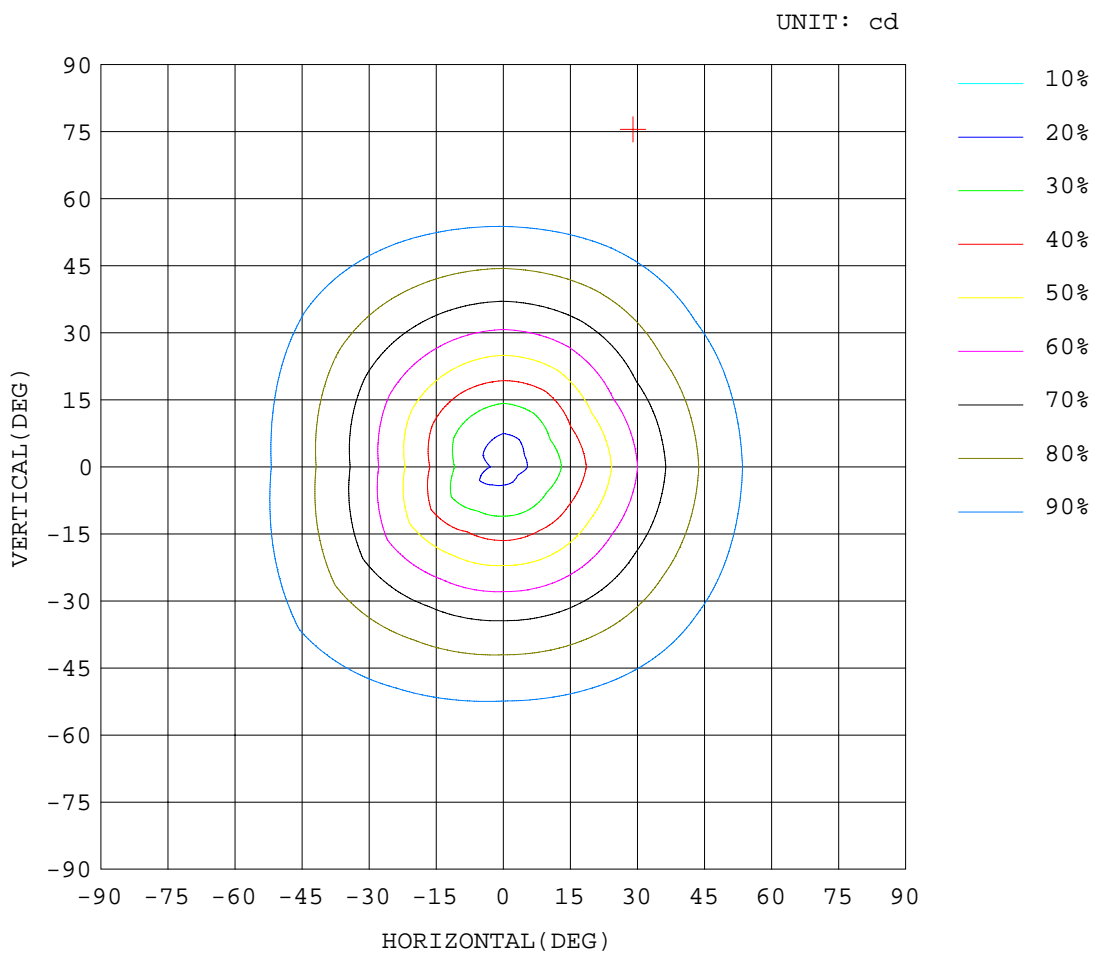
Test System:HOPPO HPG1800
 Temperature:25.3DEG
 Operators:
 Test Date:2014年12月04日

Test Set: 8.0deg/s C-Gamma (TYPE C)
 Humidity:65.0%
 Test Distance:6.000 m
 Remarks:

ISOCANDELA DIAGRAM

Report number:

MANUFACTURER:	Address:	
NAME: 250W	TYPE:	WEIGHT:
SPECIFICATION:	DIMENSION:	SERIAL No.:



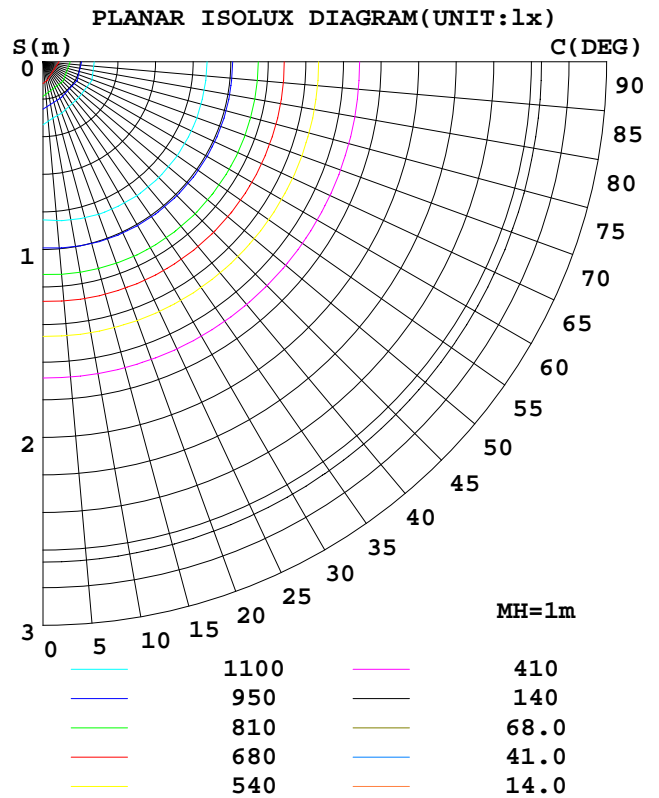
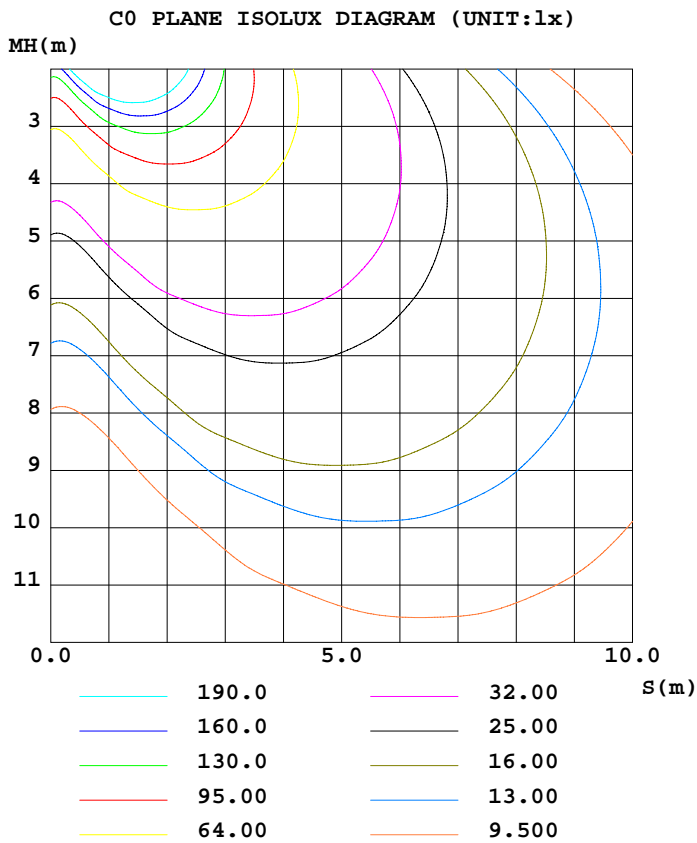
Test System:HOPOO HPG1800
 Temperature:25.3DEG
 Operators:
 Test Date:2014年12月04日

Test Set: 8.0deg/s C-Gamma (TYPE C)
 Humidity:65.0%
 Test Distance:6.000 m
 Remarks:

ISOLUX DIAGRAM

Report number:

MANUFACTURER:	Address:	
NAME: 250W	TYPE:	WEIGHT:
SPECIFICATION:	DIMENSION:	SERIAL No.:



Test System:HOPPO HPG1800
 Temperature:25.3DEG
 Operators:
 Test Date:2014年12月04日

Test Set: 8.0deg/s C-Gamma (TYPE C)
 Humidity:65.0%
 Test Distance:6.000 m
 Remarks:

HONGPU GONIOPHOTOMETERS SYSTEM TEST REPORT

LUMINOUS DISTRIBUTION INTENSITY DATA

Report number:

MANUFACTURER:	Address:	
NAME: 250W	TYPE:	WEIGHT:
SPECIFICATION:	DIMENSION:	SERIAL No.:

UNIT: cd

γ (DEG)	C (DEG)											
	0	30	60	90	120	150	180	210	240	270	300	330
0.0	598	584	561	545	528	529	598	584	561	545	528	529
5.0	640	689	683	684	665	609	718	645	609	576	576	637
10.0	827	912	917	917	905	823	927	840	804	765	778	868
15.0	1083	1184	1249	1211	1248	1086	1226	1099	1079	1022	1056	1144
20.0	1380	1484	1498	1513	1482	1379	1511	1399	1366	1328	1348	1450
25.0	1678	1777	1790	1804	1775	1672	1804	1698	1667	1636	1653	1754
30.0	1954	2042	2055	2066	2037	1940	2079	1969	1948	1919	1944	2029
35.0	2220	2294	2303	2312	2284	2195	2320	2225	2202	2186	2204	2290
40.0	2460	2519	2528	2533	2504	2426	2540	2456	2439	2428	2449	2522
45.0	2660	2708	2713	2717	2686	2617	2731	2652	2650	2636	2663	2715
50.0	2835	2873	2875	2876	2846	2785	2884	2825	2819	2822	2837	2883
55.0	2979	3003	3003	3001	2973	2921	3013	2965	2964	2974	2986	3020
60.0	3088	3099	3095	3092	3065	3023	3109	3068	3075	3088	3102	3121
65.0	3172	3167	3159	3155	3129	3098	3171	3143	3153	3173	3183	3193
70.0	3224	3207	3195	3190	3165	3143	3206	3189	3204	3228	3237	3234
75.0	3247	3220	3206	3199	3176	3162	3217	3208	3229	3255	3261	3248
80.0	3248	3213	3197	3189	3168	3161	3208	3206	3230	3259	3261	3242
85.0	3234	3194	3177	3170	3151	3147	3190	3191	3216	3244	3246	3222
90.0	3215	3170	3152	3145	3127	3128	3163	3172	3196	3224	3223	3197
95.0	3180	3128	3106	3097	3081	3090	3116	3134	3162	3191	3188	3152
100.0	3120	3061	3034	3022	3009	3028	3045	3073	3103	3134	3128	3083
105.0	3039	2970	2938	2925	2914	2944	2945	2988	3016	3052	3040	2990
110.0	2928	2846	2808	2789	2782	2827	2820	2870	2906	2935	2928	2863
115.0	2782	2692	2654	2636	2628	2675	2660	2721	2758	2787	2776	2705
120.0	2627	2539	2501	2479	2472	2526	2499	2566	2596	2629	2614	2548
125.0	2455	2363	2321	2295	2293	2352	2323	2397	2430	2457	2445	2367
130.0	2264	2158	2120	2083	2088	2152	2116	2199	2234	2263	2245	2156
135.0	2045	1947	1903	1872	1874	1945	1901	1989	2009	2049	2019	1942
140.0	1823	1716	1668	1633	1639	1718	1679	1767	1793	1824	1803	1714
145.0	1584	1469	1431	1388	1403	1473	1426	1516	1542	1569	1550	1457
150.0	1335	1230	1180	1138	1147	1241	1232	1275	1296	1324	1299	1209
155.0	1071	960	923	877	890	966	921	1017	1040	1062	1042	925
160.0	818	702	678	618	643	709	671	762	778	799	771	688
165.0	568	470	436	392	407	473	445	527	535	553	522	448
170.0	329	256	236	197	207	257	243	312	315	323	298	233
175.0	143	103	102	76.0	70.7	109	53.1	141	146	142	163	68.9
180.0	55.0	52.2	53.7	51.4	53.3	51.1	54.4	54.2	51.3	53.9	51.2	53.3

Test System:HOPOO HPG1800
 Temperature:25.3DEG
 Operators:
 Test Date:2014年12月04日

Test Set: 8.0deg/s C-Gamma (TYPE C)
 Humidity:65.0%
 Test Distance:6.000 m
 Remarks: