

HONGPU GONIOPHOTOMETERS SYSTEM TEST REPORT

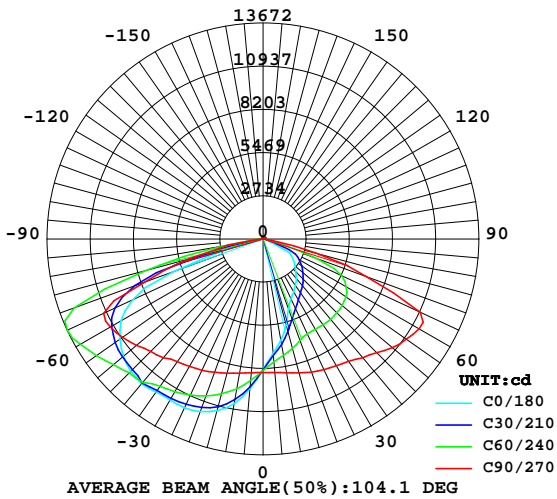
LUMINAIRE PHOTOMETRIC TEST REPORT

Report number:

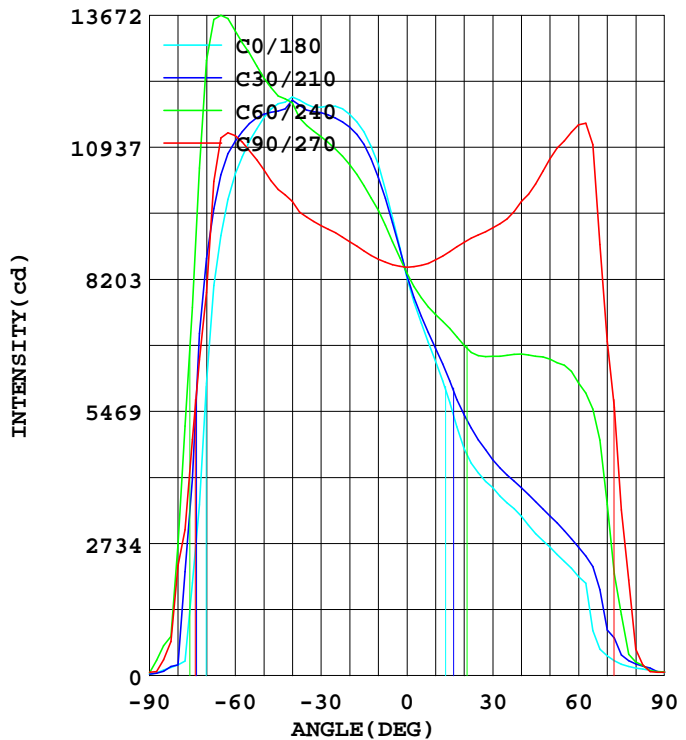
MANUFACTURER:	Address:		
NAME: GPL-100	TYPE:	WEIGHT:	
SPECIFICATION:	DIMENSION:	SERIAL No.:	

DATA OF LAMP		Imax(cd)	13853	S/MH(C0/180)	2.02
MODEL		EFFICIENCY(%)	100.0	S/MH(C90/270)	1.75
NOMINAL POWER(W)	318	TOTAL FLUX(lm)	38746	Voltage(V)	219.1
RATED VOLTAGE(V)	220	EFFICIENCY(lm/W)	122.0	Current(A)	1.467
NOMINAL FLUX(lm)	38745.6	$\eta$ up(%)	1.5	Power(W)	317.7
LAMPS QUANTITY	1	$\eta$ down(%)	98.5	Power Factor(PF)	0.988
TEST VOLTAGE(V)	219.1	Effictive Flux(lm)	37621.8	EEI	0.115

LUMINOUS INTENSITY DISTRIBUTION



LUMINOUS INTENSITY DISTRIBUTION



Test System:HOP00 HPG1800  
 Temperature:25.3DEG  
 Operators:  
 Test Date:04-15-2018

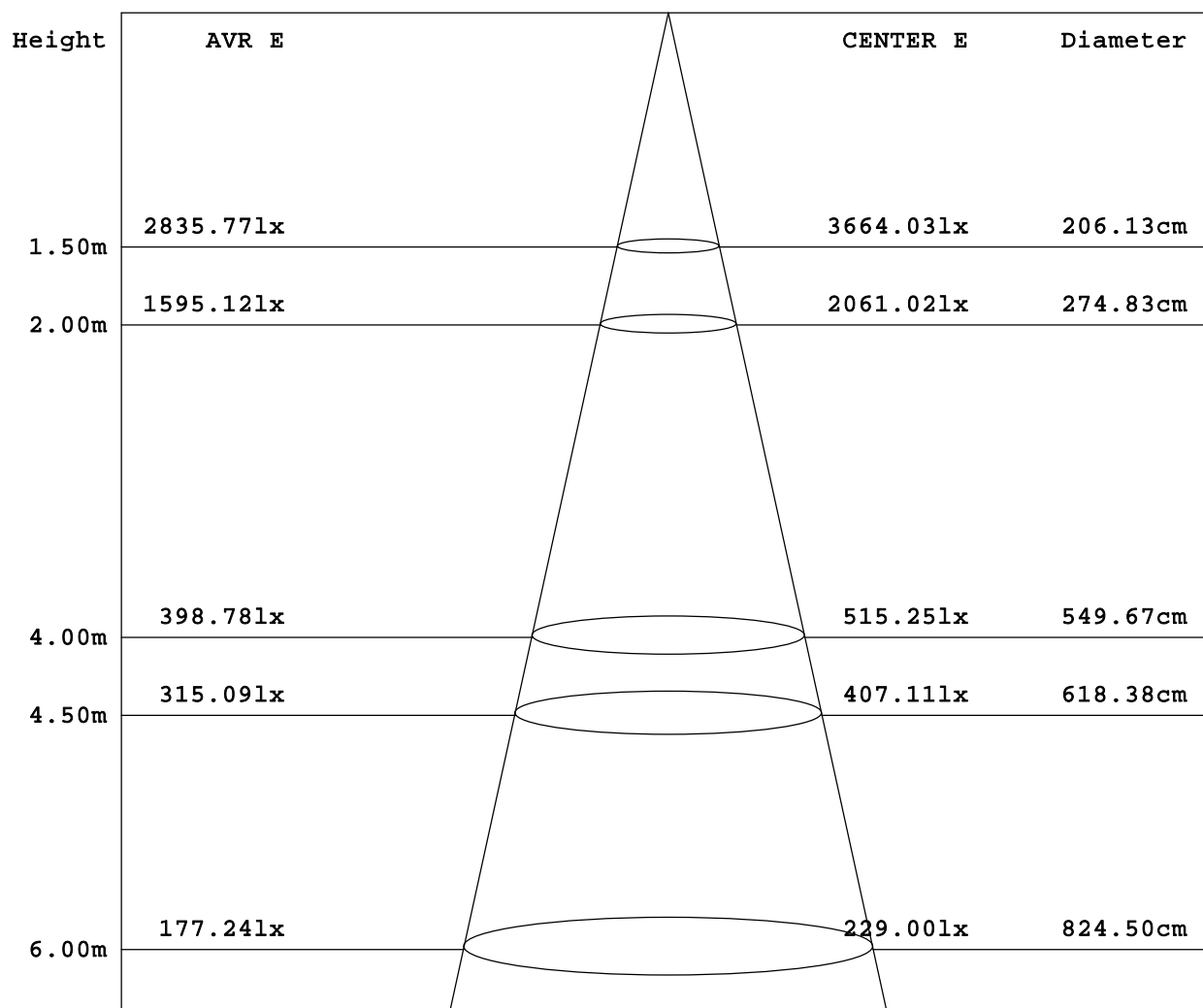
Test Set: 10.0deg/s C-Gamma (TYPE C)  
 Humidity:65.0%  
 Test Distance:6.000 m  
 Remarks:

HONGPU GONIOPHOTOMETERS SYSTEM TEST REPORT

AVERAGE AND CENTER E Figure

Report number:

MANUFACTURER:	Address:	
NAME: GPL-100	TYPE:	WEIGHT:
SPECIFICATION:	DIMENSION:	SERIAL No.:



Angle: 69.0deg

Test System:HOPOO HPG1800  
 Temperature:25.3DEG  
 Operators:  
 Test Date:04-15-2018

Test Set: 10.0deg/s C-Gamma (TYPE C)  
 Humidity:65.0%  
 Test Distance:6.000 m  
 Remarks:

# HONGPU GONIOPHOTOMETERS SYSTEM TEST REPORT

## ZONAL FLUX DIAGRAM

Report number:

<b>MANUFACTURER:</b>	<b>Address:</b>	
<b>NAME:</b> GPL-100	<b>TYPE:</b>	<b>WEIGHT:</b>
<b>SPECIFICATION:</b>	<b>DIMENSION:</b>	<b>SERIAL No.:</b>

$\gamma$	C0	C45	C90	C135	C180	C225	C270	C315	$\gamma$	$\Phi$ zone	$\Phi$ total
5.0	948.0	917.9	850.4	786.2	729.8	762.8	848.9	942.1	0- 5	202.3	202.3
10.0	1058	997.1	861.9	732.4	652.0	713.1	860.4	1018	5- 10	613.0	815.3
15.0	1125	1057	878.8	683.4	565.7	664.2	877.6	1069	10- 15	1027	1842
20.0	1162	1097	898.5	628.9	469.7	611.6	896.9	1104	15- 20	1422	3264
25.0	1179	1122	916.5	591.0	419.6	575.0	912.1	1128	20- 25	1797	5061
30.0	1177	1141	931.4	568.0	389.2	554.0	926.6	1144	25- 30	2161	7222
35.0	1183	1155	949.3	551.9	357.4	539.0	945.0	1161	30- 35	2512	9735
40.0	1198	1189	982.0	539.3	329.5	527.0	981.4	1187	35- 40	2867	12602
45.0	1184	1184	1006	525.8	294.0	510.7	1018	1190	40- 45	3190	15792
50.0	1155	1200	1047	511.5	265.9	492.6	1070	1198	45- 50	3479	19271
55.0	1107	1216	1087	493.4	236.3	471.2	1107	1216	50- 55	3748	23019
60.0	1039	1221	1118	467.9	205.2	436.2	1140	1214	55- 60	3954	26973
65.0	911.1	1202	1113	426.6	93.21	388.7	1099	1174	60- 65	4033	31006
70.0	605.4	1068	792.7	333.9	40.71	224.2	691.3	935.4	65- 70	3629	34634
75.0	191.9	584.8	488.4	143.8	23.34	84.43	343.2	390.3	70- 75	2329	36963
80.0	22.32	146.7	227.3	38.56	15.49	25.95	54.46	68.47	75- 80	904.6	37868
85.0	11.83	35.62	33.03	17.80	10.62	12.66	8.348	22.69	80- 85	215.5	38083
90.0	3.099	4.174	6.721	8.663	6.400	7.666	6.807	3.792	85- 90	62.04	38145
95.0	3.128	4.345	7.282	8.677	7.750	8.807	7.592	4.181	90- 95	33.71	38179
100.0	3.355	4.752	8.200	9.869	9.118	9.908	8.351	4.640	95-100	37.37	38217
105.0	3.697	5.220	8.992	10.83	10.39	10.67	8.992	5.104	100-105	40.90	38257
110.0	4.068	5.607	9.453	11.36	11.31	11.17	9.342	5.490	105-110	42.99	38300
115.0	4.467	5.961	9.720	11.71	11.80	11.59	9.579	5.841	110-115	43.76	38344
120.0	4.874	6.296	9.828	12.14	12.49	12.09	9.730	6.228	115-120	43.79	38388
125.0	5.302	6.676	10.11	12.61	13.06	12.51	10.03	6.656	120-125	43.49	38432
130.0	5.842	7.117	10.54	13.20	13.79	13.18	10.52	7.172	125-130	43.01	38475
135.0	6.465	7.689	11.21	14.01	14.48	13.91	11.18	7.842	130-135	42.43	38517
140.0	7.336	8.420	11.90	14.67	15.17	14.63	11.79	8.542	135-140	41.45	38558
145.0	8.244	9.174	12.51	15.31	15.72	15.19	12.35	9.297	140-145	39.71	38598
150.0	9.144	9.889	13.00	15.62	16.07	15.42	12.78	9.973	145-150	36.78	38635
155.0	10.06	10.54	13.28	15.53	16.13	15.32	13.09	10.62	150-155	32.65	38668
160.0	10.92	11.13	13.32	15.19	15.97	15.04	13.20	11.20	155-160	27.56	38695
165.0	11.77	11.70	13.32	14.78	15.62	14.63	13.23	11.78	160-165	21.86	38717
170.0	12.55	12.13	13.29	14.32	15.17	14.14	13.23	12.30	165-170	15.81	38733
175.0	13.33	12.64	13.29	13.81	14.66	13.65	13.28	12.81	170-175	9.555	38742
180.0	14.06	13.21	13.30	13.32	14.13	13.16	13.33	13.33	175-180	3.200	38746
DEG	LUMINOUS INTENSITY: x10cd									UNIT: lm	

Test System:HOPOO HPG1800  
 Temperature:25.3DEG  
 Operators:  
 Test Date:04-15-2018

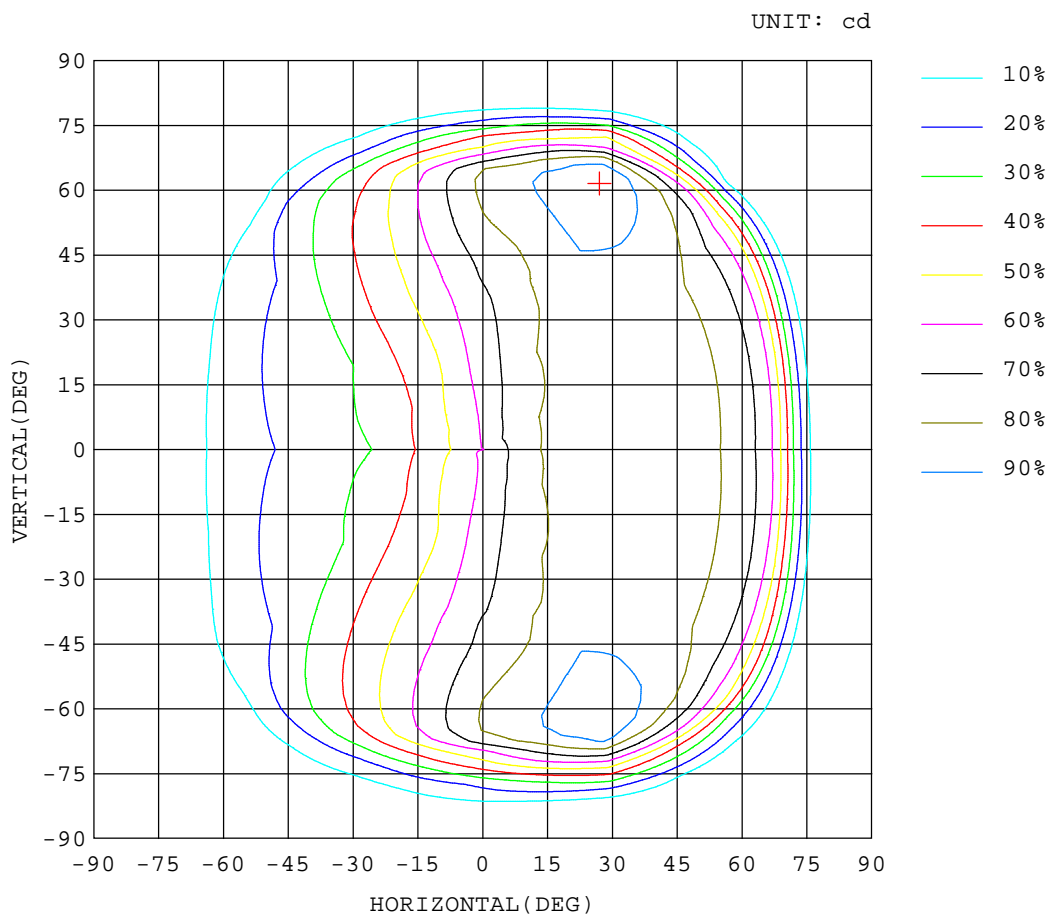
Test Set: 10.0deg/s C-Gamma (TYPE C)  
 Humidity:65.0%  
 Test Distance:6.000 m  
 Remarks:

HONGPU GONIOPHOTOMETERS SYSTEM TEST REPORT

ISOCANDELA DIAGRAM

Report number:

MANUFACTURER:	Address:	
NAME: GPL-100	TYPE:	WEIGHT:
SPECIFICATION:	DIMENSION:	SERIAL No.:



Test System:HOP00 HPG1800  
 Temperature:25.3DEG  
 Operators:  
 Test Date:04-15-2018

Test Set: 10.0deg/s C-Gamma (TYPE C)  
 Humidity:65.0%  
 Test Distance:6.000 m  
 Remarks:

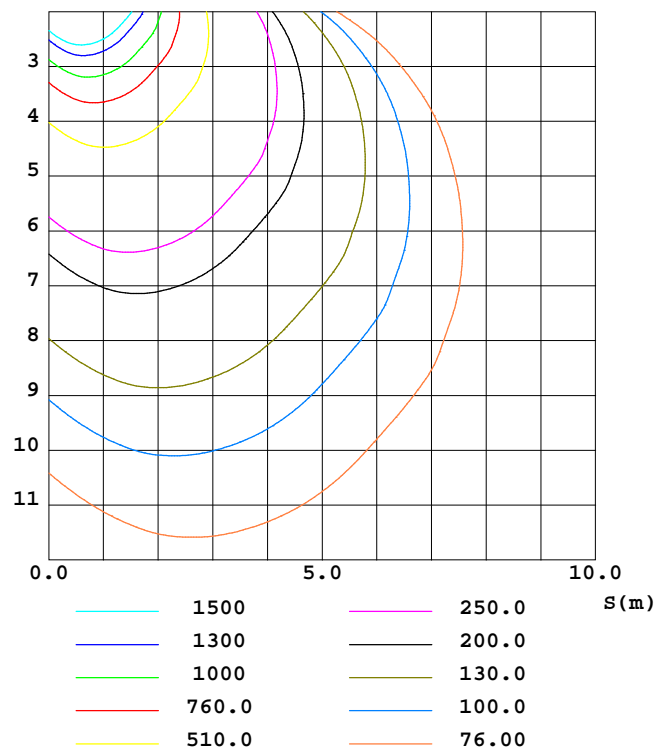
HONGPU GONIOPHOTOMETERS SYSTEM TEST REPORT

ISOLUX DIAGRAM

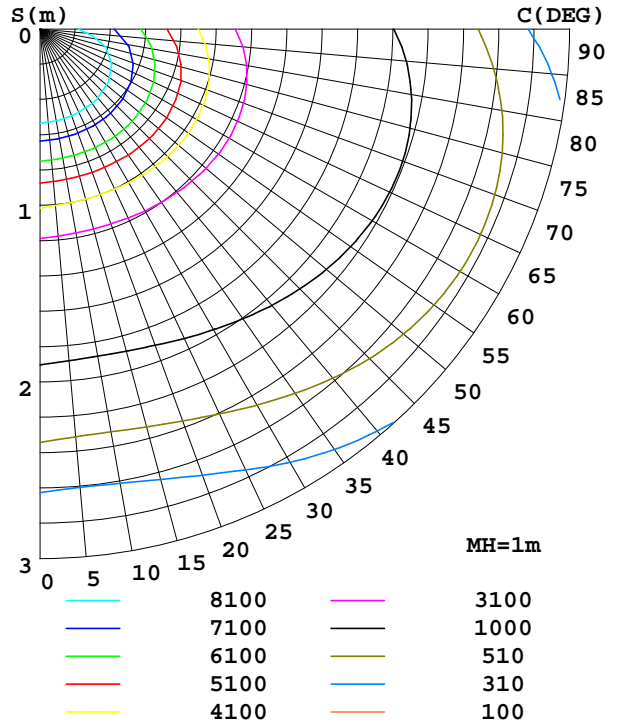
Report number:

MANUFACTURER:	Address:	
NAME: GPL-100	TYPE:	WEIGHT:
SPECIFICATION:	DIMENSION:	SERIAL No.:

C0 PLANE ISOLUX DIAGRAM (UNIT:lx)



PLANAR ISOLUX DIAGRAM(UNIT:lx)



Test System:HOP00 HPG1800  
 Temperature:25.3DEG  
 Operators:  
 Test Date:04-15-2018

Test Set: 10.0deg/s C-Gamma (TYPE C)  
 Humidity:65.0%  
 Test Distance:6.000 m  
 Remarks:

**HONGPU GONIOPHOTOMETERS SYSTEM TEST REPORT**

**LUMINOUS DISTRIBUTION INTENSITY DATA**

Report number:

<b>MANUFACTURER:</b>	<b>Address:</b>	
<b>NAME: GPL-100</b>	<b>TYPE:</b>	<b>WEIGHT:</b>
<b>SPECIFICATION:</b>	<b>DIMENSION:</b>	<b>SERIAL No.:</b>

UNIT: ×10cd

γ (DEG)	C (DEG)											
	0	30	60	90	120	150	180	210	240	270	300	330
0.0	824	829	833	846	858	865	824	829	833	846	858	865
5.0	948	938	898	850	805	768	730	744	782	849	919	966
10.0	1058	1031	963	862	764	701	652	678	748	860	982	1054
15.0	1125	1100	1014	879	734	633	566	610	719	878	1031	1107
20.0	1162	1136	1058	899	698	560	470	540	684	897	1072	1136
25.0	1179	1154	1090	917	673	509	420	488	662	912	1103	1152
30.0	1177	1166	1116	931	670	466	389	447	661	927	1130	1158
35.0	1183	1171	1139	949	670	433	357	415	663	945	1155	1168
40.0	1198	1191	1186	982	677	401	330	389	665	981	1198	1175
45.0	1184	1169	1200	1006	682	369	294	360	661	1018	1217	1162
50.0	1155	1162	1238	1047	683	340	266	330	655	1070	1244	1153
55.0	1107	1143	1289	1087	677	310	236	300	642	1107	1304	1129
60.0	1039	1107	1334	1118	659	277	205	266	606	1140	1356	1071
65.0	911	1037	1367	1113	614	239	93.2	226	552	1099	1385	962
70.0	605	863	1274	793	487	181	40.7	94.1	354	691	1156	715
75.0	192	407	762	488	210	77.4	23.3	42.7	126	343	663	118
80.0	22.3	22.3	271	227	48.2	28.9	15.4	24.0	27.8	54.4	119	17.7
85.0	11.8	8.97	62.2	33.0	17.8	17.7	10.6	15.2	10.0	8.34	38.6	6.76
90.0	3.09	2.97	5.37	6.72	9.56	7.76	6.40	7.72	7.60	6.80	4.27	3.31
95.0	3.12	3.23	5.45	7.28	9.11	8.24	7.75	8.87	8.74	7.59	4.83	3.52
100.0	3.35	3.60	5.89	8.20	10.1	9.56	9.11	10.0	9.74	8.35	5.43	3.84
105.0	3.69	4.04	6.39	8.99	10.9	10.7	10.3	10.9	10.3	8.99	5.97	4.23
110.0	4.06	4.47	6.74	9.45	11.2	11.4	11.3	11.5	10.7	9.34	6.36	4.61
115.0	4.46	4.89	7.03	9.72	11.4	11.9	11.8	12.0	11.0	9.57	6.68	4.99
120.0	4.87	5.29	7.30	9.82	11.7	12.5	12.4	12.7	11.4	9.73	7.05	5.40
125.0	5.30	5.72	7.63	10.1	12.1	13.0	13.0	13.2	11.8	10.0	7.46	5.85
130.0	5.84	6.23	7.99	10.5	12.7	13.6	13.7	13.7	12.5	10.5	7.93	6.40
135.0	6.46	6.87	8.50	11.2	13.7	14.3	14.4	14.4	13.3	11.1	8.53	7.14
140.0	7.33	7.67	9.16	11.9	14.3	15.0	15.1	15.1	14.0	11.7	9.23	7.85
145.0	8.24	8.49	9.84	12.5	14.9	15.6	15.7	15.7	14.6	12.3	9.94	8.64
150.0	9.14	9.30	10.4	13.0	15.2	15.9	16.0	15.9	14.8	12.7	10.5	9.35
155.0	10.0	10.0	11.0	13.2	15.2	15.8	16.1	15.8	14.8	13.0	11.1	10.1
160.0	10.9	10.8	11.4	13.3	14.8	15.5	15.9	15.5	14.5	13.2	11.5	10.8
165.0	11.7	11.5	11.8	13.3	14.4	15.0	15.6	15.1	14.1	13.2	11.9	11.5
170.0	12.5	12.0	12.2	13.2	14.0	14.6	15.1	14.5	13.7	13.2	12.3	12.2
175.0	13.3	12.6	12.5	13.2	13.5	14.0	14.6	14.0	13.2	13.2	12.7	12.8
180.0	14.0	13.4	13.0	13.3	13.1	13.5	14.1	13.3	12.9	13.3	13.2	13.4

Test System:HOPOO HPG1800  
 Temperature:25.3DEG  
 Operators:  
 Test Date:04-15-2018

Test Set: 10.0deg/s C-Gamma (TYPE C)  
 Humidity:65.0%  
 Test Distance:6.000 m  
 Remarks: