

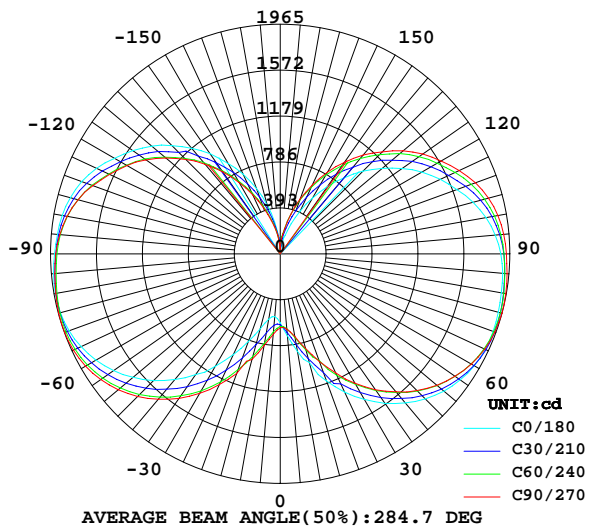
LUMINAIRE PHOTOMETRIC TEST REPORT

Report number:

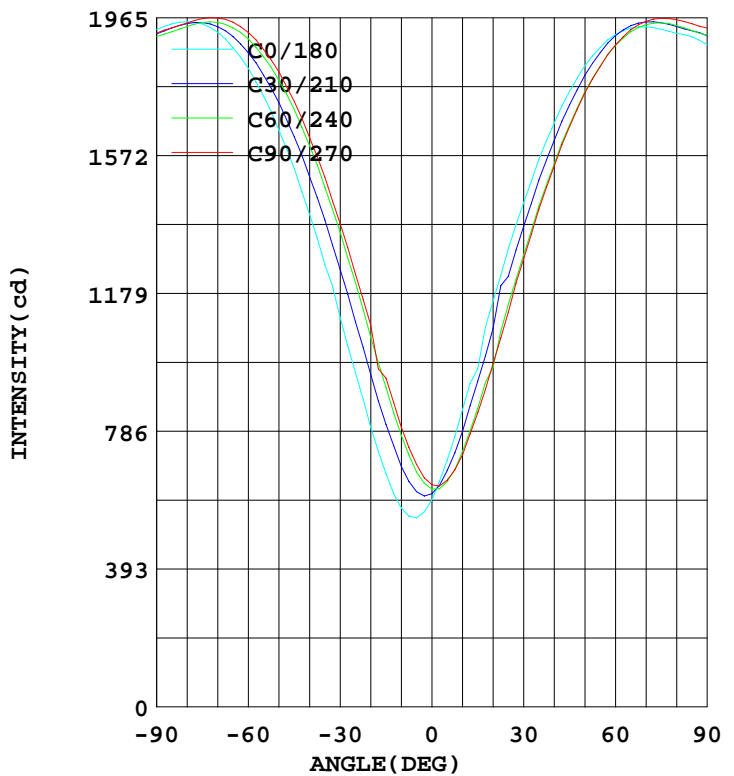
MANUFACTURER:	Address:	
NAME: 150W	TYPE:	WEIGHT:
SPECIFICATION:	DIMENSION:	SERIAL No.:

DATA OF LAMP		Imax(cd)	1974	S/MH(C0/180)	2.99
MODEL		EFFICIENCY(%)	100.0	S/MH(C90/270)	2.95
NOMINAL POWER(W)	152	TOTAL FLUX(lm)	19549	Voltage(V)	220.1
RATED VOLTAGE(V)	220	EFFICIENCY(lm/W)	129.5	Current(A)	0.704
NOMINAL FLUX(lm)	19548.9	η up(%)	44.7	Power(W)	151.0
LAMPS QUANTITY	1	η down(%)	55.3	Power Factor(PF)	0.975
TEST VOLTAGE(V)	220.1	Effictive Flux(lm)	19534.7	EEL	0.105

LUMINOUS INTENSITY DISTRIBUTION



LUMINOUS INTENSITY DISTRIBUTION



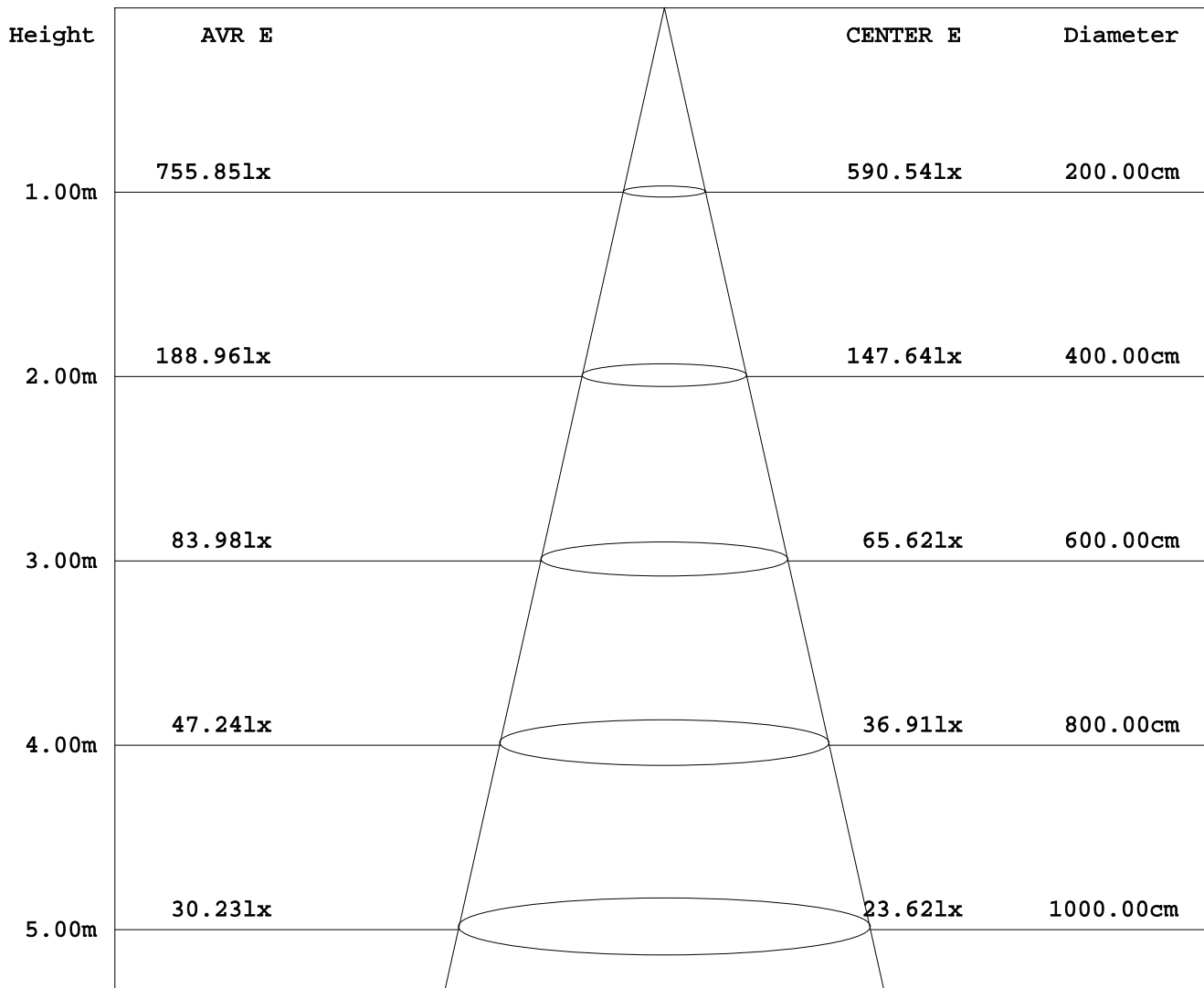
Test System:HOPOO HPG1800
 Temperature:25.3DEG
 Operators:
 Test Date:2014年06月23日

Test Set: 8.0deg/s C-Gamma (TYPE C)
 Humidity:65.0%
 Test Distance:6.000 m
 Remarks:

AVERAGE AND CENTER E Figure

Report number:

MANUFACTURER:	Address:	
NAME: 150W	TYPE:	WEIGHT:
SPECIFICATION:	DIMENSION:	SERIAL No.:



Angle:90.0deg

Test System:HOPPO HPG1800
 Temperature:25.3DEG
 Operators:
 Test Date:2014年06月23日

Test Set: 8.0deg/s C-Gamma (TYPE C)
 Humidity:65.0%
 Test Distance:6.000 m
 Remarks:

HONGPU GONIOPHOTOMETERS SYSTEM TEST REPORT

ZONAL FLUX DIAGRAM

Report number:

MANUFACTURER:	Address:	
NAME: 150W	TYPE:	WEIGHT:
SPECIFICATION:	DIMENSION:	SERIAL No.:

γ	C0	C45	C90	C135	C180	C225	C270	C315	γ	Φ zone	Φ total
5.0	538.9	641.5	691.3	728.3	703.3	658.0	646.4	634.8	0- 5	15.35	15.35
10.0	567.2	730.3	797.7	843.8	848.1	757.3	718.8	688.7	5- 10	50.36	65.72
15.0	664.8	857.9	937.0	987.0	963.5	890.2	838.5	793.2	10- 15	96.37	162.0
20.0	798.1	1002	1089	1133	1158	1024	979.4	928.6	15- 20	155.8	317.9
25.0	953.0	1154	1234	1278	1307	1188	1126	1081	20- 25	230.4	548.3
30.0	1111	1301	1378	1415	1438	1330	1278	1232	25- 30	314.6	862.9
35.0	1261	1435	1510	1537	1562	1465	1419	1372	30- 35	407.0	1270
40.0	1405	1556	1624	1646	1665	1582	1542	1498	35- 40	503.6	1774
45.0	1534	1665	1726	1741	1755	1689	1655	1616	40- 45	600.9	2375
50.0	1644	1754	1810	1817	1828	1778	1751	1719	45- 50	695.1	3070
55.0	1742	1828	1875	1877	1880	1846	1826	1801	50- 55	783.3	3853
60.0	1821	1885	1923	1921	1917	1900	1887	1870	55- 60	862.2	4715
65.0	1880	1924	1952	1946	1936	1934	1931	1922	60- 65	929.2	5645
70.0	1923	1945	1964	1956	1939	1949	1955	1952	65- 70	982.5	6627
75.0	1948	1951	1962	1953	1932	1951	1964	1966	70- 75	1021	7648
80.0	1954	1945	1951	1944	1921	1942	1959	1965	75- 80	1044	8692
85.0	1948	1931	1936	1935	1911	1928	1948	1952	80- 85	1056	9748
90.0	1931	1915	1921	1918	1888	1914	1935	1934	85- 90	1056	10804
95.0	1915	1896	1894	1886	1846	1890	1920	1917	90- 95	1045	11849
100.0	1895	1863	1853	1837	1790	1851	1891	1890	95-100	1021	12870
105.0	1860	1810	1792	1767	1709	1793	1845	1847	100-105	980.6	13851
110.0	1809	1740	1707	1676	1609	1716	1779	1785	105-110	924.0	14775
115.0	1734	1649	1611	1578	1511	1620	1689	1700	110-115	852.3	15627
120.0	1637	1549	1514	1475	1401	1521	1590	1600	115-120	771.6	16399
125.0	1542	1446	1403	1359	1273	1416	1491	1503	120-125	686.3	17085
130.0	1435	1326	1277	1228	1139	1292	1372	1394	125-130	595.7	17681
135.0	1311	1192	1143	1094	1001	1160	1235	1265	130-135	502.4	18183
140.0	1181	1057	1002	936.0	850.2	1017	1106	1133	135-140	411.2	18594
145.0	1048	912.2	856.9	806.8	705.2	876.7	955.4	998.6	140-145	322.8	18917
150.0	893.6	765.7	705.4	656.6	553.2	729.1	807.1	843.1	145-150	242.1	19159
155.0	753.4	620.6	558.3	513.7	405.2	582.3	651.0	671.5	150-155	170.3	19330
160.0	596.9	478.8	421.6	381.5	273.9	443.4	499.8	518.4	155-160	110.1	19440
165.0	433.0	343.2	296.7	263.8	162.3	311.5	350.8	374.8	160-165	63.87	19504
170.0	277.9	218.3	196.8	178.3	85.93	197.4	215.9	254.6	165-170	31.49	19535
175.0	131.6	119.3	102.7	88.03	34.23	109.7	131.5	161.1	170-175	11.76	19547
180.0	52.30	34.55	32.00	48.40	55.72	36.91	35.45	43.36	175-180	1.938	19549
DEG	LUMINOUS INTENSITY:cd									UNIT:lm	

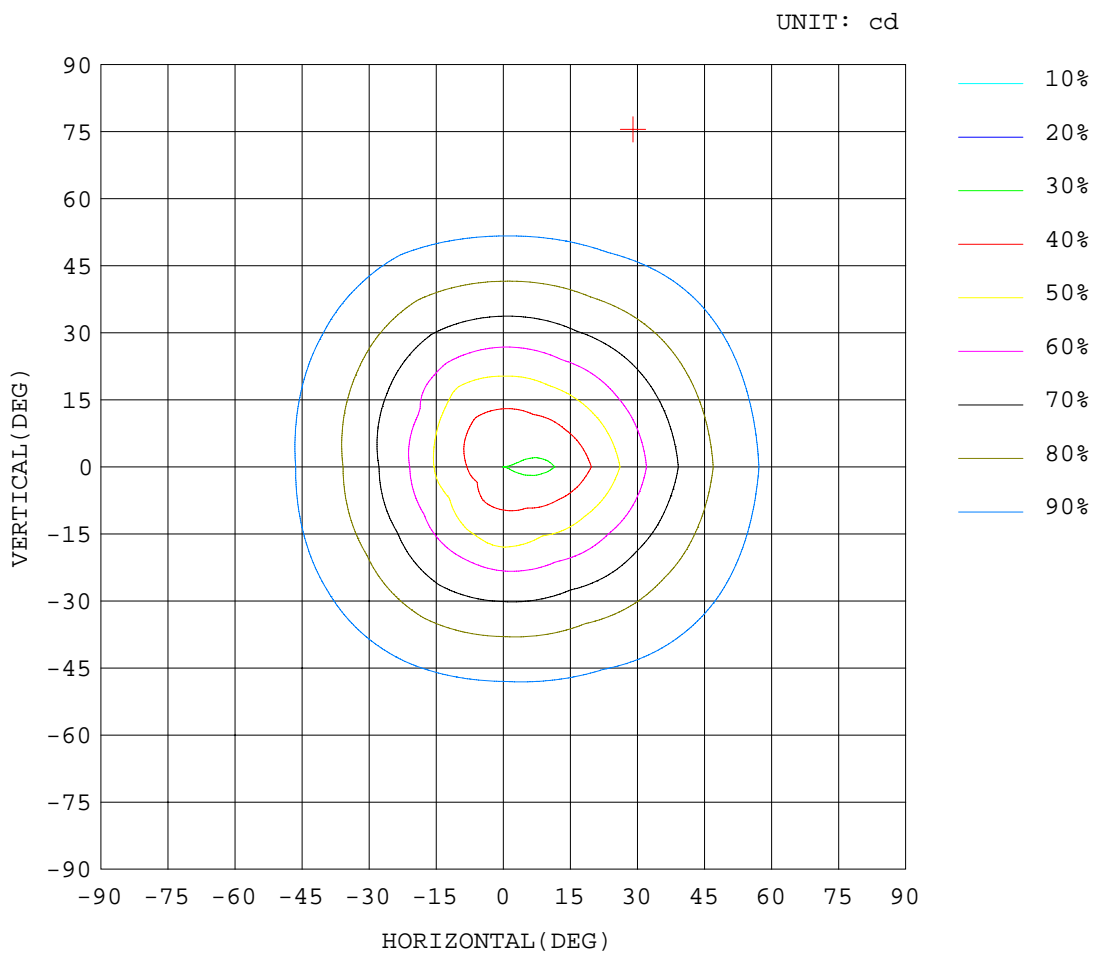
Test System:HOPPO HPG1800
 Temperature:25.3DEG
 Operators:
 Test Date:2014年06月23日

Test Set: 8.0deg/s C-Gamma (TYPE C)
 Humidity:65.0%
 Test Distance:6.000 m
 Remarks:

ISOCANDELA DIAGRAM

Report number:

MANUFACTURER:	Address:	
NAME: 150W	TYPE:	WEIGHT:
SPECIFICATION:	DIMENSION:	SERIAL No.:



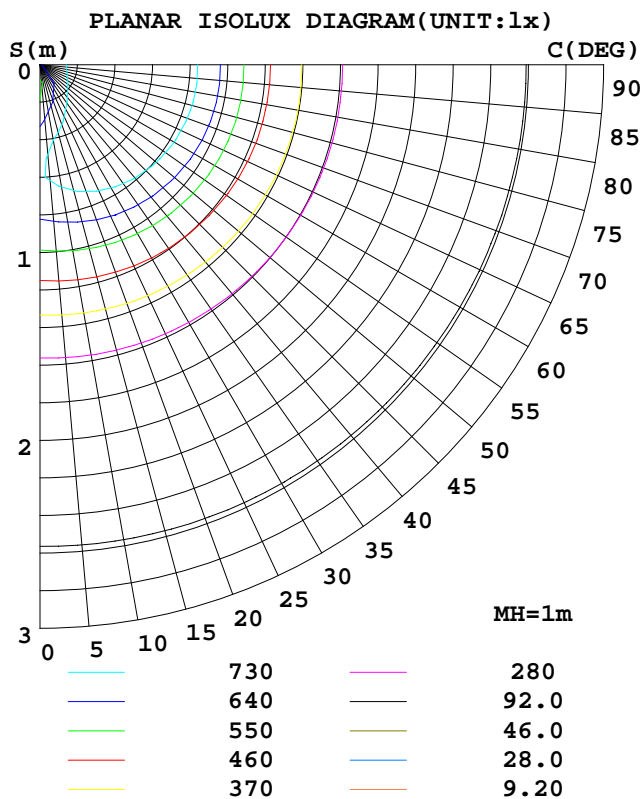
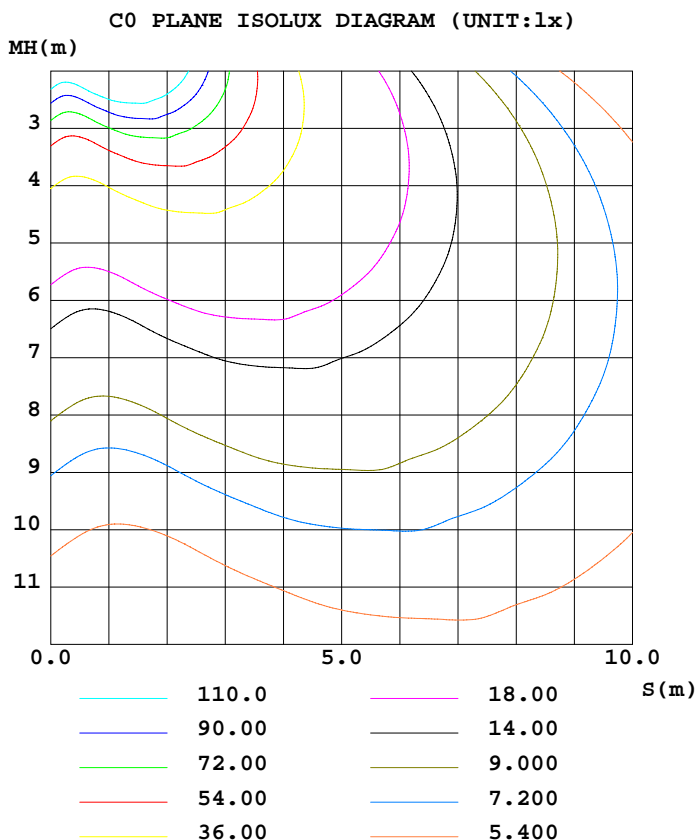
Test System:HOPOO HPG1800
 Temperature:25.3DEG
 Operators:
 Test Date:2014年06月23日

Test Set: 8.0deg/s C-Gamma (TYPE C)
 Humidity:65.0%
 Test Distance:6.000 m
 Remarks:

ISOLUX DIAGRAM

Report number:

MANUFACTURER:	Address:	
NAME: 150W	TYPE:	WEIGHT:
SPECIFICATION:	DIMENSION:	SERIAL No.:



Test System:HOPPO HPG1800
 Temperature:25.3DEG
 Operators:
 Test Date:2014年06月23日

Test Set: 8.0deg/s C-Gamma (TYPE C)
 Humidity:65.0%
 Test Distance:6.000 m
 Remarks:

HONGPU GONIOPHOTOMETERS SYSTEM TEST REPORT

LUMINOUS DISTRIBUTION INTENSITY DATA

Report number:

MANUFACTURER:	Address:	
NAME: 150W	TYPE:	WEIGHT:
SPECIFICATION:	DIMENSION:	SERIAL No.:

UNIT: cd

γ (DEG)	C (DEG)											
	0	30	60	90	120	150	180	210	240	270	300	330
0.0	591	608	621	633	647	655	591	608	621	633	647	655
5.0	539	614	669	691	708	749	703	674	642	646	647	622
10.0	567	686	775	798	816	871	848	786	728	719	715	662
15.0	665	805	911	937	955	1019	964	929	852	839	826	761
20.0	798	948	1055	1089	1097	1169	1158	1080	969	979	962	895
25.0	953	1098	1210	1234	1248	1308	1307	1228	1148	1126	1124	1038
30.0	1111	1248	1354	1378	1388	1442	1438	1371	1289	1278	1266	1197
35.0	1261	1389	1482	1510	1512	1562	1562	1503	1428	1419	1407	1336
40.0	1405	1512	1601	1624	1629	1663	1665	1616	1549	1542	1529	1467
45.0	1534	1625	1704	1726	1730	1751	1755	1717	1660	1655	1643	1588
50.0	1644	1723	1786	1810	1811	1823	1828	1801	1754	1751	1743	1694
55.0	1742	1801	1854	1875	1878	1877	1880	1866	1827	1826	1822	1781
60.0	1821	1865	1905	1923	1928	1915	1917	1914	1886	1887	1887	1853
65.0	1880	1912	1936	1952	1957	1935	1936	1942	1925	1931	1935	1909
70.0	1923	1939	1952	1964	1971	1941	1939	1953	1945	1955	1962	1943
75.0	1948	1951	1952	1962	1970	1937	1932	1951	1951	1964	1974	1959
80.0	1954	1949	1940	1951	1961	1928	1921	1940	1943	1959	1971	1958
85.0	1948	1936	1925	1936	1949	1920	1911	1928	1929	1948	1958	1947
90.0	1931	1919	1911	1921	1935	1901	1888	1914	1915	1935	1941	1927
95.0	1915	1903	1889	1894	1906	1866	1846	1886	1895	1920	1924	1909
100.0	1895	1875	1850	1853	1860	1814	1790	1840	1862	1891	1895	1885
105.0	1860	1829	1791	1792	1794	1740	1709	1775	1810	1845	1848	1846
110.0	1809	1764	1716	1707	1706	1646	1609	1690	1741	1779	1780	1791
115.0	1734	1679	1619	1611	1607	1550	1511	1590	1650	1689	1690	1711
120.0	1637	1578	1519	1514	1507	1443	1401	1491	1552	1590	1589	1612
125.0	1542	1475	1417	1403	1397	1322	1273	1380	1451	1491	1487	1519
130.0	1435	1364	1288	1277	1264	1191	1139	1248	1336	1372	1376	1411
135.0	1311	1229	1154	1143	1134	1055	1001	1117	1202	1235	1241	1288
140.0	1181	1093	1022	1002	965	907	850	968	1066	1106	1105	1161
145.0	1048	953	872	857	848	766	705	830	923	955	969	1028
150.0	894	809	723	705	697	616	553	680	778	807	812	874
155.0	753	659	582	558	557	471	405	537	628	651	619	724
160.0	597	518	440	422	420	343	274	397	490	500	465	572
165.0	433	372	314	297	296	232	162	273	350	351	322	427
170.0	278	234	202	197	202	155	85.9	172	223	216	209	300
175.0	132	139	99.9	103	111	65.5	34.2	71.3	148	132	145	177
180.0	52.3	33.5	35.5	32.0	39.1	57.6	55.7	41.9	31.8	35.4	35.0	51.6

Test System:HOPOO HPG1800
 Temperature:25.3DEG
 Operators:
 Test Date:2014年06月23日

Test Set: 8.0deg/s C-Gamma (TYPE C)
 Humidity:65.0%
 Test Distance:6.000 m
 Remarks: