

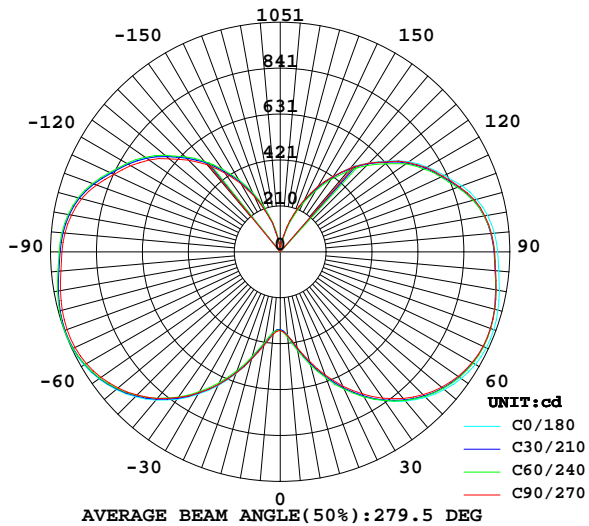
LUMINAIRE PHOTOMETRIC TEST REPORT

Report number:

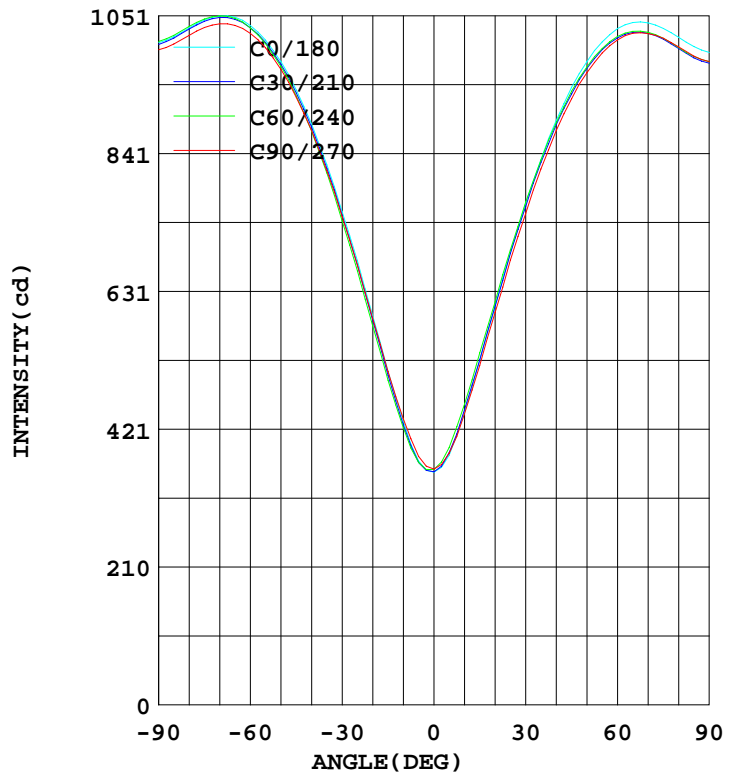
MANUFACTURER:	Address:		
NAME: 80W	TYPE:	WEIGHT:	
SPECIFICATION:	DIMENSION:	SERIAL No.:	

DATA OF LAMP		Imax(cd)	1051	S/MH(C0/180)	2.90
MODEL		EFFICIENCY(%)	100.0	S/MH(C90/270)	2.87
NOMINAL POWER(W)	80	TOTAL FLUX(lm)	10254	Voltage(V)	110.3
RATED VOLTAGE(V)	110	EFFICIENCY(lm/W)	127.4	Current(A)	0.744
NOMINAL FLUX(lm)	10253.6	η up(%)	43.2	Power(W)	80.48
LAMPS QUANTITY	1	η down(%)	56.8	Power Factor(PF)	0.980
TEST VOLTAGE(V)	110.3	Effictive Flux(lm)	10242.9	EEL	0.107

LUMINOUS INTENSITY DISTRIBUTION



LUMINOUS INTENSITY DISTRIBUTION



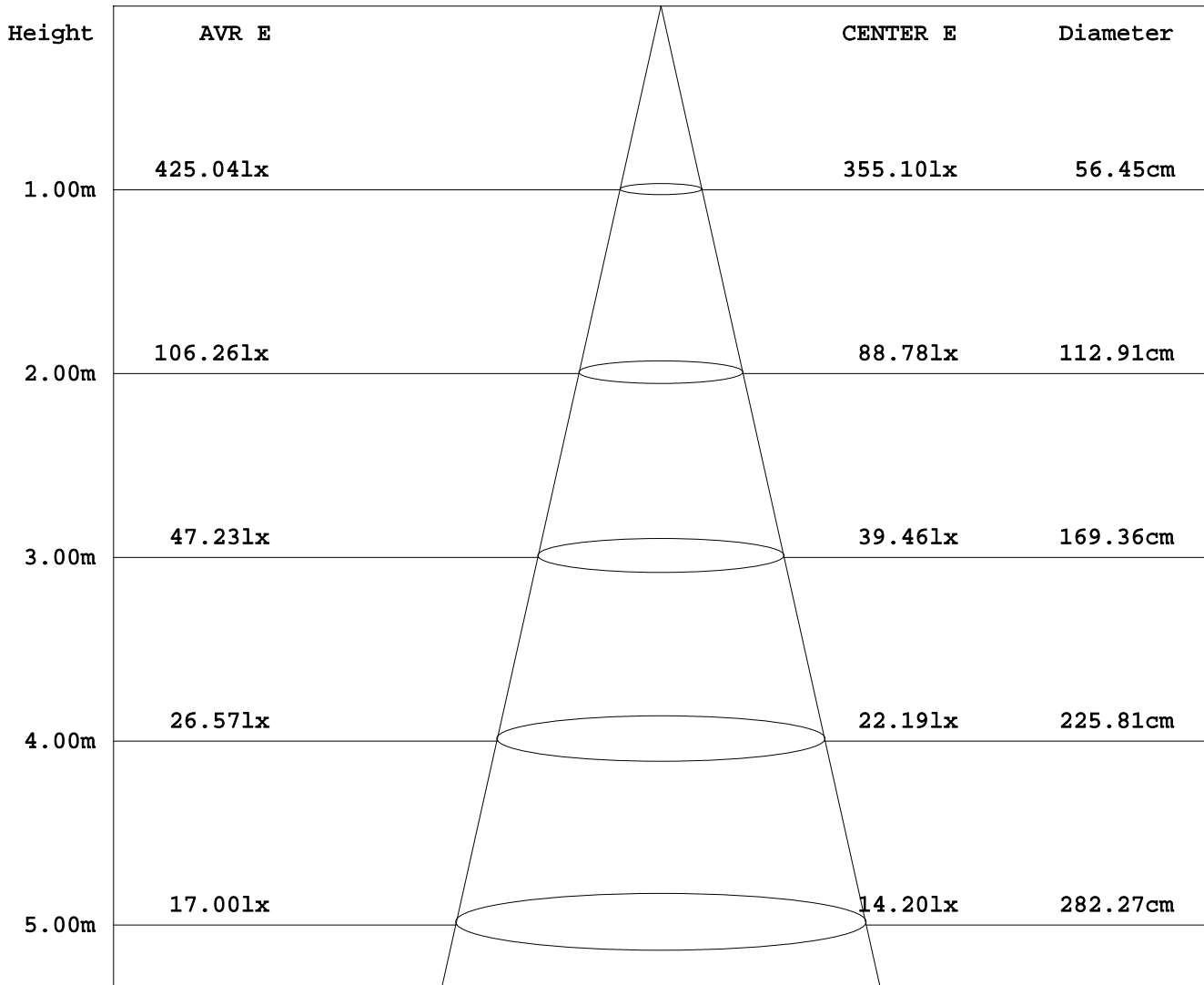
Test System:HOPOO HPG1800
 Temperature:25.3DEG
 Operators:
 Test Date:2014年08月08日

Test Set: 8.0deg/s C-Gamma (TYPE C)
 Humidity:65.0%
 Test Distance:6.000 m
 Remarks:

AVERAGE AND CENTER E Figure

Report number:

MANUFACTURER:	Address:	
NAME: 80W	TYPE:	WEIGHT:
SPECIFICATION:	DIMENSION:	SERIAL No.:



Angle: 31.5deg

Test System: HOPOO HPG1800
 Temperature: 25.3DEG
 Operators:
 Test Date: 2014年08月08日

Test Set: 8.0deg/s C-Gamma (TYPE C)
 Humidity: 65.0%
 Test Distance: 6.000 m
 Remarks:

HONGPU GONIOPHOTOMETERS SYSTEM TEST REPORT

ZONAL FLUX DIAGRAM

Report number:

MANUFACTURER:	Address:	
NAME: 80W	TYPE:	WEIGHT:
SPECIFICATION:	DIMENSION:	SERIAL No.:

γ	C0	C45	C90	C135	C180	C225	C270	C315	γ	Φ zone	Φ total
5.0	371.9	369.6	379.1	388.2	381.0	388.8	383.9	376.7	0- 5	8.832	8.832
10.0	432.8	425.2	436.7	448.9	446.3	454.8	444.4	431.3	5- 10	29.40	38.23
15.0	508.7	498.9	508.3	521.3	526.6	531.7	517.9	503.0	10- 15	56.74	94.98
20.0	593.5	582.6	589.8	600.8	607.4	611.7	598.7	581.8	15- 20	91.75	186.7
25.0	677.0	666.1	670.8	678.9	689.5	691.3	678.4	662.1	20- 25	133.5	320.2
30.0	752.3	742.6	745.1	749.4	765.6	763.7	749.6	736.3	25- 30	180.6	500.9
35.0	823.7	814.9	814.6	815.7	831.6	828.9	817.5	804.5	30- 35	231.3	732.2
40.0	886.3	878.5	876.3	873.8	891.6	886.7	876.4	865.3	35- 40	283.2	1016
45.0	937.8	930.9	926.6	921.1	942.1	934.1	924.6	916.1	40- 45	334.7	1350
50.0	981.1	975.3	969.4	960.7	981.0	972.0	964.3	957.3	45- 50	383.7	1734
55.0	1014	1009	1002	990.4	1011	1000	994.6	989.5	50- 55	428.4	2162
60.0	1036	1033	1024	1010	1032	1019	1014	1011	55- 60	467.4	2630
65.0	1049	1047	1036	1020	1041	1027	1024	1023	60- 65	499.4	3129
70.0	1051	1050	1039	1020	1040	1025	1024	1025	65- 70	523.1	3652
75.0	1045	1045	1033	1013	1032	1016	1017	1018	70- 75	538.3	4191
80.0	1033	1033	1021	1001	1019	1002	1004	1006	75- 80	545.6	4737
85.0	1019	1019	1008	988.4	1004	988.1	989.5	991.2	80- 85	546.8	5283
90.0	1010	1010	999.5	981.3	995.3	980.0	981.2	981.1	85- 90	544.7	5828
95.0	1001	1001	989.6	970.6	984.3	968.5	970.7	971.3	90- 95	540.0	6368
100.0	982.7	983.2	970.2	950.6	963.7	948.2	951.1	953.0	95-100	528.1	6896
105.0	954.4	955.1	941.7	920.5	931.1	915.2	921.2	924.1	100-105	507.0	7403
110.0	909.7	911.8	895.4	873.7	885.3	866.3	873.1	881.8	105-110	475.5	7879
115.0	857.5	857.5	840.3	820.3	829.0	813.9	820.8	827.8	110-115	435.1	8314
120.0	806.4	807.2	790.7	770.3	777.8	764.2	772.3	778.0	115-120	392.5	8707
125.0	749.5	751.2	733.2	712.6	720.3	705.7	713.9	724.1	120-125	348.7	9055
130.0	682.1	683.9	662.6	644.2	648.1	633.1	642.7	655.9	125-130	300.9	9356
135.0	607.3	611.6	593.9	574.4	577.0	565.3	575.0	584.5	130-135	250.7	9607
140.0	534.7	538.1	521.3	501.8	504.2	490.0	501.5	514.8	135-140	203.6	9811
145.0	452.9	456.7	439.1	422.6	421.3	410.3	421.0	433.6	140-145	157.7	9969
150.0	371.6	378.1	362.0	345.1	337.8	329.1	345.2	358.7	145-150	115.9	10084
155.0	287.4	293.4	280.3	265.4	259.3	248.9	264.0	279.7	150-155	79.25	10164
160.0	206.9	212.9	199.2	189.6	179.6	172.0	186.5	200.0	155-160	49.06	10213
165.0	128.9	141.2	138.5	119.7	106.8	102.8	118.2	140.0	160-165	26.27	10239
170.0	64.11	70.25	64.54	61.75	47.95	47.80	60.58	65.95	165-170	10.82	10250
175.0	26.60	28.40	26.49	28.07	20.08	21.88	26.74	29.52	170-175	3.085	10253
180.0	22.46	20.41	19.58	21.02	20.95	21.43	22.64	21.69	175-180	0.560	10254
DEG	LUMINOUS INTENSITY:cd									UNIT:lm	

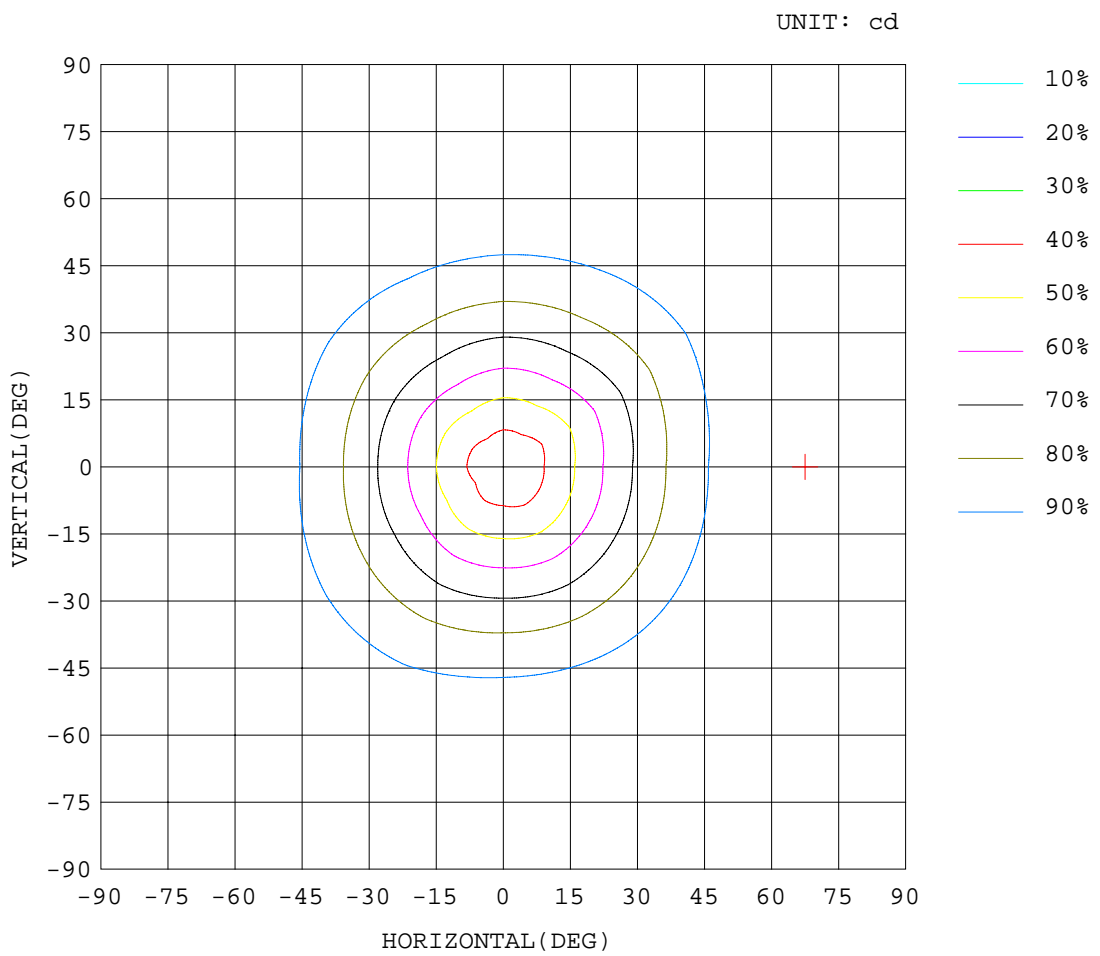
Test System:HOPPO HPG1800
 Temperature:25.3DEG
 Operators:
 Test Date:2014年08月08日

Test Set: 8.0deg/s C-Gamma (TYPE C)
 Humidity:65.0%
 Test Distance:6.000 m
 Remarks:

ISOCANDELA DIAGRAM

Report number:

MANUFACTURER:	Address:	
NAME: 80W	TYPE:	WEIGHT:
SPECIFICATION:	DIMENSION:	SERIAL No.:



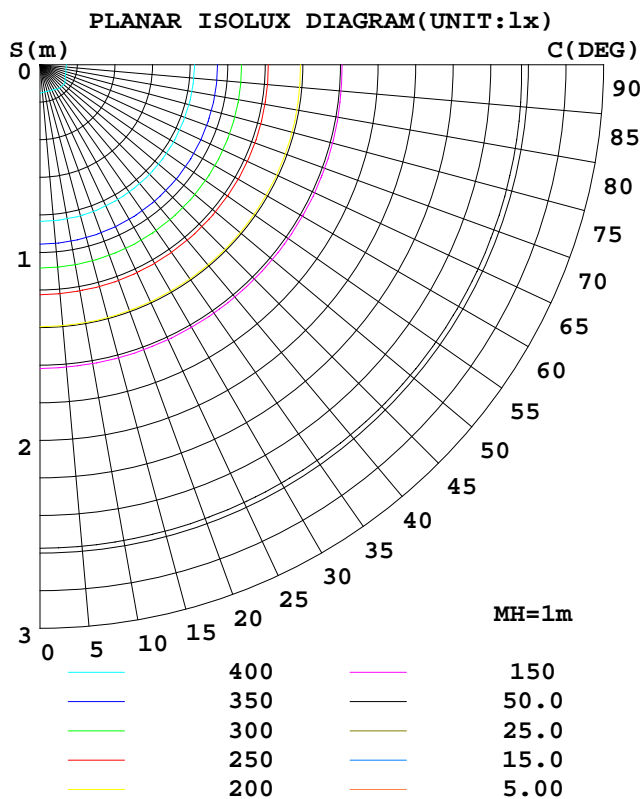
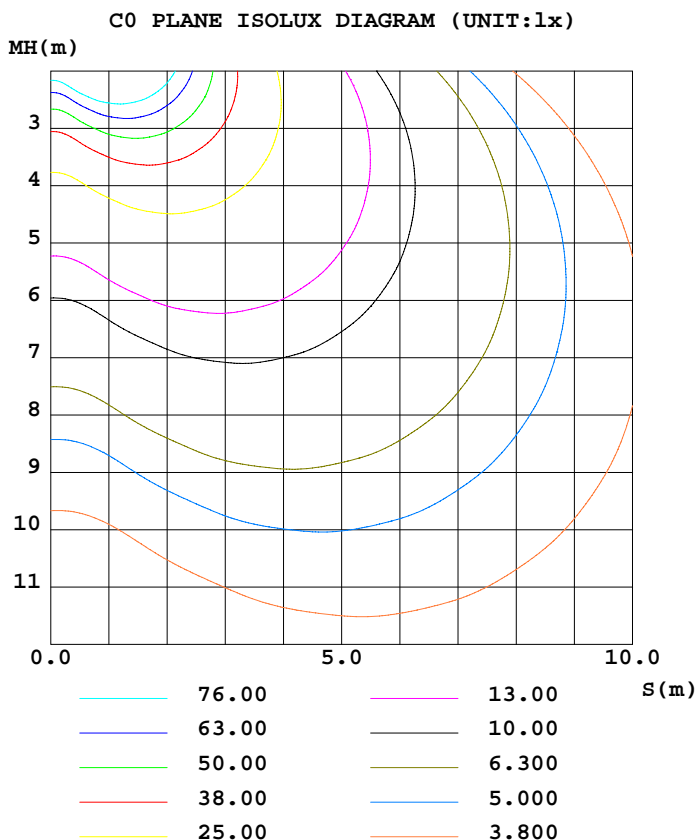
Test System:HOPOO HPG1800
 Temperature:25.3DEG
 Operators:
 Test Date:2014年08月08日

Test Set: 8.0deg/s C-Gamma (TYPE C)
 Humidity:65.0%
 Test Distance:6.000 m
 Remarks:

ISOLUX DIAGRAM

Report number:

MANUFACTURER:	Address:	
NAME: 80W	TYPE:	WEIGHT:
SPECIFICATION:	DIMENSION:	SERIAL No.:



Test System:HOPPO HPG1800
 Temperature:25.3DEG
 Operators:
 Test Date:2014年08月08日

Test Set: 8.0deg/s C-Gamma (TYPE C)
 Humidity:65.0%
 Test Distance:6.000 m
 Remarks:

HONGPU GONIOPHOTOMETERS SYSTEM TEST REPORT

LUMINOUS DISTRIBUTION INTENSITY DATA

Report number:

MANUFACTURER:	Address:	
NAME: 80W	TYPE:	WEIGHT:
SPECIFICATION:	DIMENSION:	SERIAL No.:

UNIT: cd

γ (DEG)	C (DEG)											
	0	30	60	90	120	150	180	210	240	270	300	330
0.0	355	356	359	360	361	360	355	356	359	360	361	360
5.0	372	370	370	379	382	394	381	385	393	384	384	370
10.0	433	427	423	437	440	458	446	451	459	444	442	420
15.0	509	503	495	508	511	531	527	526	537	518	517	489
20.0	594	587	579	590	591	611	607	609	615	599	594	570
25.0	677	671	662	671	670	688	690	689	694	678	673	651
30.0	752	747	738	745	741	758	766	760	767	750	748	725
35.0	824	818	811	815	809	822	832	827	831	818	813	796
40.0	886	882	876	876	869	879	892	885	888	876	872	859
45.0	938	933	929	927	917	925	942	932	936	925	922	910
50.0	981	977	974	969	958	963	981	971	973	964	960	954
55.0	1014	1010	1009	1002	989	992	1011	1000	1001	995	991	988
60.0	1036	1033	1033	1024	1010	1010	1032	1018	1020	1014	1011	1011
65.0	1049	1046	1047	1036	1022	1018	1041	1026	1028	1024	1021	1025
70.0	1051	1049	1051	1039	1023	1017	1040	1024	1026	1024	1022	1028
75.0	1045	1043	1046	1033	1017	1009	1032	1016	1017	1017	1014	1023
80.0	1033	1031	1035	1021	1005	996	1019	1001	1003	1004	1001	1011
85.0	1019	1017	1021	1008	993	984	1004	987	989	990	986	996
90.0	1010	1008	1012	1000	985	978	995	979	981	981	977	986
95.0	1001	998	1003	990	975	966	984	968	970	971	966	977
100.0	983	981	986	970	956	945	964	948	948	951	946	960
105.0	954	952	958	942	927	914	931	916	914	921	915	934
110.0	910	909	915	895	883	865	885	869	864	873	871	893
115.0	858	854	862	840	829	812	829	816	812	821	818	838
120.0	806	804	811	791	779	762	778	768	760	772	766	790
125.0	750	747	755	733	723	703	720	709	703	714	712	736
130.0	682	679	689	663	658	631	648	638	628	643	642	670
135.0	607	608	615	594	585	563	577	572	559	575	569	600
140.0	535	535	542	521	515	488	504	496	484	502	501	528
145.0	453	451	463	439	437	408	421	416	404	421	420	448
150.0	372	372	384	362	360	330	338	337	321	345	342	376
155.0	287	288	299	280	281	250	259	255	243	264	265	294
160.0	207	204	222	199	204	175	180	177	167	187	186	214
165.0	129	139	144	139	132	107	107	108	97.8	118	138	142
170.0	64.1	63.0	77.4	64.5	71.2	52.2	47.9	50.5	45.0	60.5	56.7	75.2
175.0	26.6	23.2	33.5	26.4	33.1	23.0	20.0	24.1	19.5	26.7	25.1	33.8
180.0	22.4	19.4	21.3	19.5	22.1	19.9	20.9	23.1	19.7	22.6	20.6	22.7

Test System:HOPOO HPG1800
 Temperature:25.3DEG
 Operators:
 Test Date:2014年08月08日

Test Set: 8.0deg/s C-Gamma (TYPE C)
 Humidity:65.0%
 Test Distance:6.000 m
 Remarks: